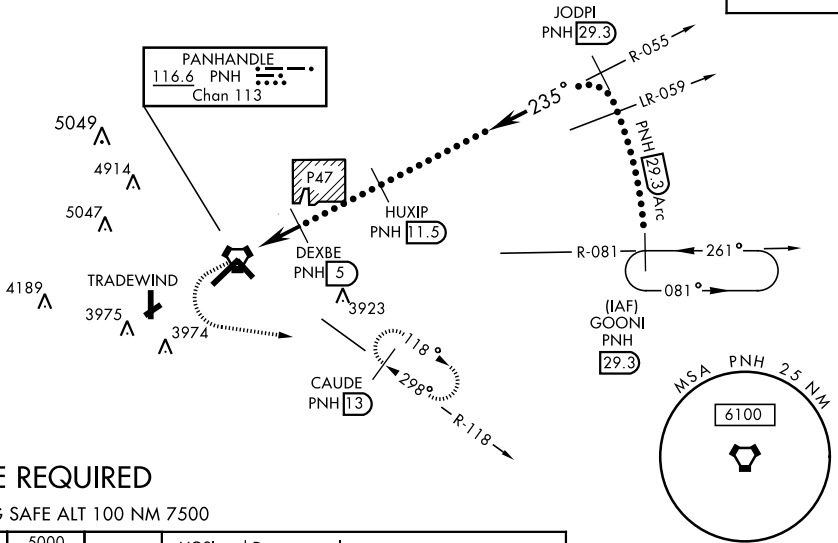
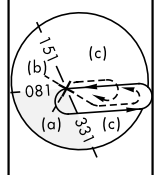


# HI-VOR or TACAN RWY 22

VORTAC PNH <b>116.6</b> Chan <b>113</b>	APCH CRS <b>235°</b>	Rwy Idg <b>13,502</b> TDZE <b>3606</b> Arpt Elev <b>3607</b>	JAL-19 [USAF]	RICK HUSBAND AMARILLO INTL (KAMA)
* When ALS inop, increase CAT CDE vis to 1½ mile. ** When ALS inop, increase CAT CDE vis to 1¾ mile. ALT MINS N/A when local altimeter not available.			MALSR  MISSED APPROACH: Climb to 4100 then climbing left turn to 5000 on heading 090° and PNH VOTRAC R-118 to CAUDE INT/PNH 13 DME and hold.	

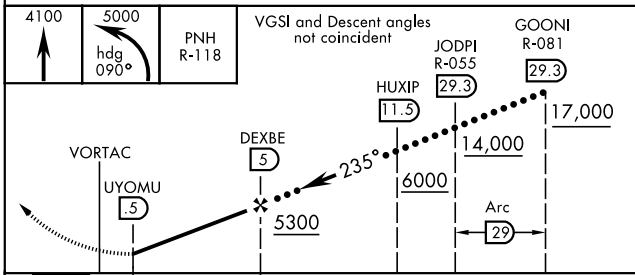
ATIS <b>118.85 350.3</b>	AMARILLO APP CON <b>119.5 307.0</b>	AMARILLO TOWER * <b>118.3 257.9</b>	GND CON <b>121.9 348.6</b>	CLNC DEL <b>121.65 239.275</b>	ASR
-----------------------------	--	--	-------------------------------	-----------------------------------	-----

When local altimeter setting not received, use Borger altimeter setting.

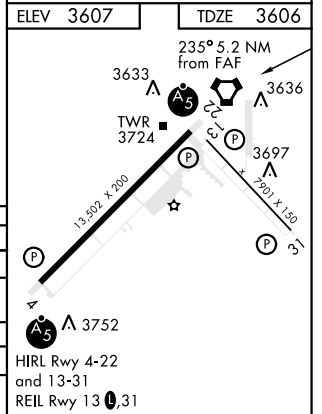


## DME REQUIRED

EMERG SAFE ALT 100 NM 7500



	CATEGORY S-22 *	C 4000-5/8 394 (400-5/8)	D 4280-2 1/4 673 (700-2 1/4)	E 4460-3 853 (900-3)
	CIRCLING	4240-1 3/4 633 (700-1 3/4)	4280-2 1/4 673 (700-2 1/4)	4460-3 853 (900-3)
BORGER ALTIMETER SETTING				
	S-22 **	4160-1 1/8 554 (600-1 1/8)		
	CIRCLING	4400-2 1/4 793 (800-2 1/4)	4420-2 3/4 813 (900-2 3/4)	4620-3 1013 (1100-3)



# HI-VOR or TACAN RWY 22

SC-2, 12 SEP 2019 to 10 OCT 2019

SC-2, 12 SEP 2019 to 10 OCT 2019