

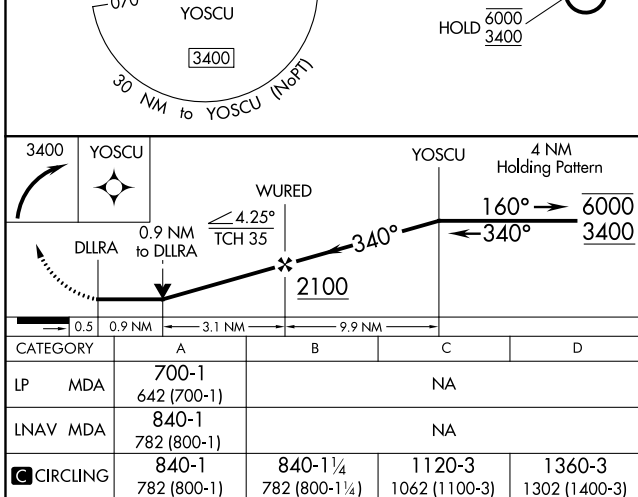
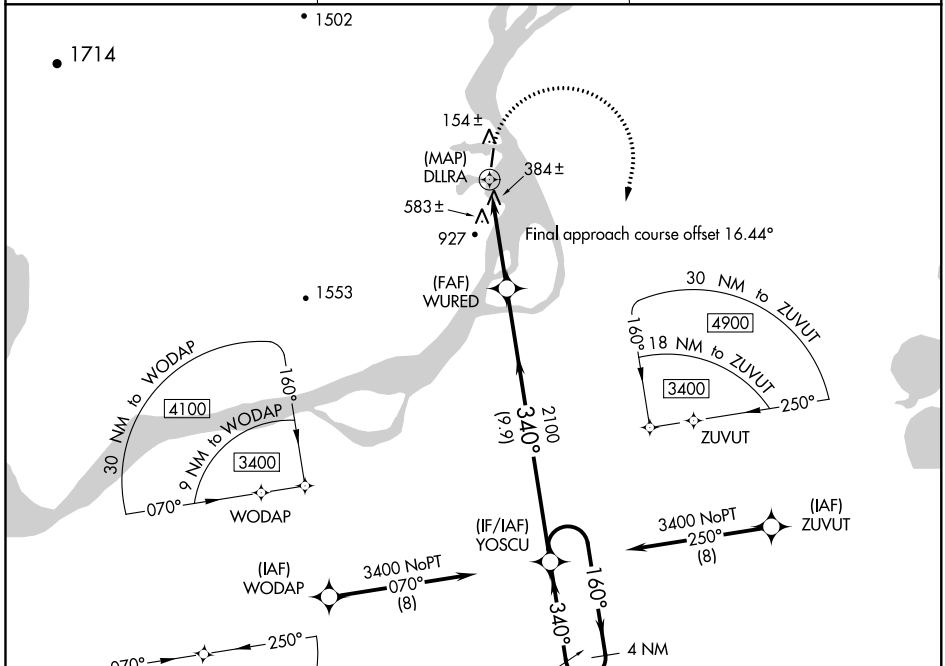
WAAS CH <b>93942</b> <b>W36A</b>	APP CRS <b>340°</b>	Rwy Idg <b>3620</b> TDZE <b>58</b> Apt Elev <b>58</b>
--	------------------------	---

# RNAV (GPS) RWY 36

RUSSIAN MISSION (RSH)(PARS)

RNP APCH.	<p>⚠ Circling Rwy 18 NA at night. Rwy 36 helicopter visibility reduction below ¾ SM NA.</p> <p>❄ -18°C</p>	<p>MISSILE APPROACH: Climbing right turn to 3400 direct YOSCU and hold.</p>
-----------	--	---

AWOS-3P <b>118.375</b>	ANCHORAGE CENTER <b>118.15 251.05</b>	CTAF <b>122.9</b>
---------------------------	--	----------------------



ELEV 58	TDZE 58
---------	---------

MIRL Rwy 18-36  
REIL Rwy 18 and 36

AK, 15 AUG 2019 to 10 OCT 2019

AK, 15 AUG 2019 to 10 OCT 2019