

(ZPLYN.ZPLYN3) 17173

# ZPLYN THREE ARRIVAL (RNAV) Arrival Route

AL-9077 (FAA)

DENVER INTL (DEN)  
DENVER, COLORADO

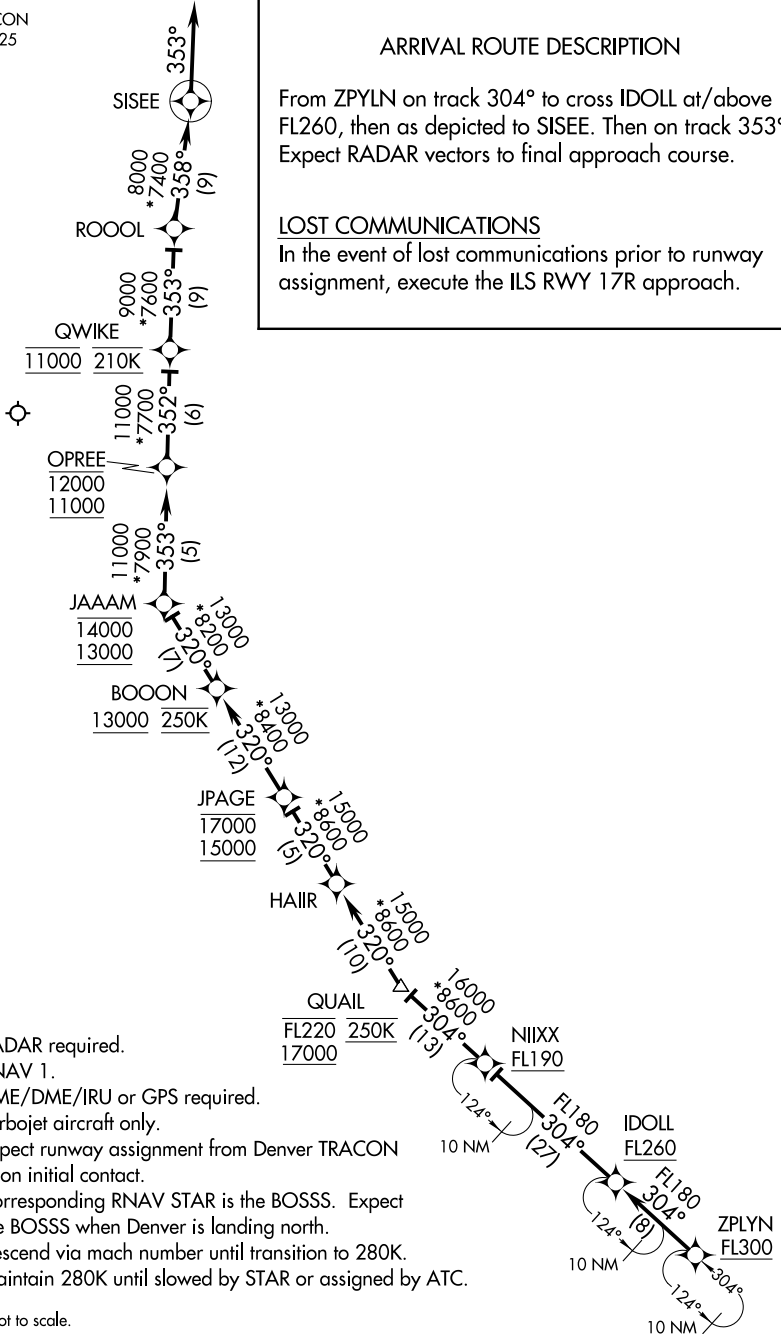
DENVER APP CON  
126.55 269.525  
D-ATIS ARR  
125.6 379.9

## ARRIVAL ROUTE DESCRIPTION

From ZPLYN on track 304° to cross IDOLL at/above FL260, then as depicted to SISEE. Then on track 353°. Expect RADAR vectors to final approach course.

## LOST COMMUNICATIONS

In the event of lost communications prior to runway assignment, execute the ILS RWY 17R approach.



- NOTE: RADAR required.
- NOTE: RNAV 1.
- NOTE: DME/DME/IRU or GPS required.
- NOTE: Turbojet aircraft only.
- NOTE: Expect runway assignment from Denver TRACON upon initial contact.
- NOTE: Corresponding RNAV STAR is the BOSSS. Expect the BOSSS when Denver is landing north.
- NOTE: Descend via mach number until transition to 280K. Maintain 280K until slowed by STAR or assigned by ATC.

NOTE: Chart not to scale.

# ZPLYN THREE ARRIVAL (RNAV) Arrival Route

(ZPLYN.ZPLYN3) 18SEP14

DENVER, COLORADO  
DENVER INTL (DEN)

SW-1, 15 AUG 2019 to 12 SEP 2019

SW-1, 15 AUG 2019 to 12 SEP 2019