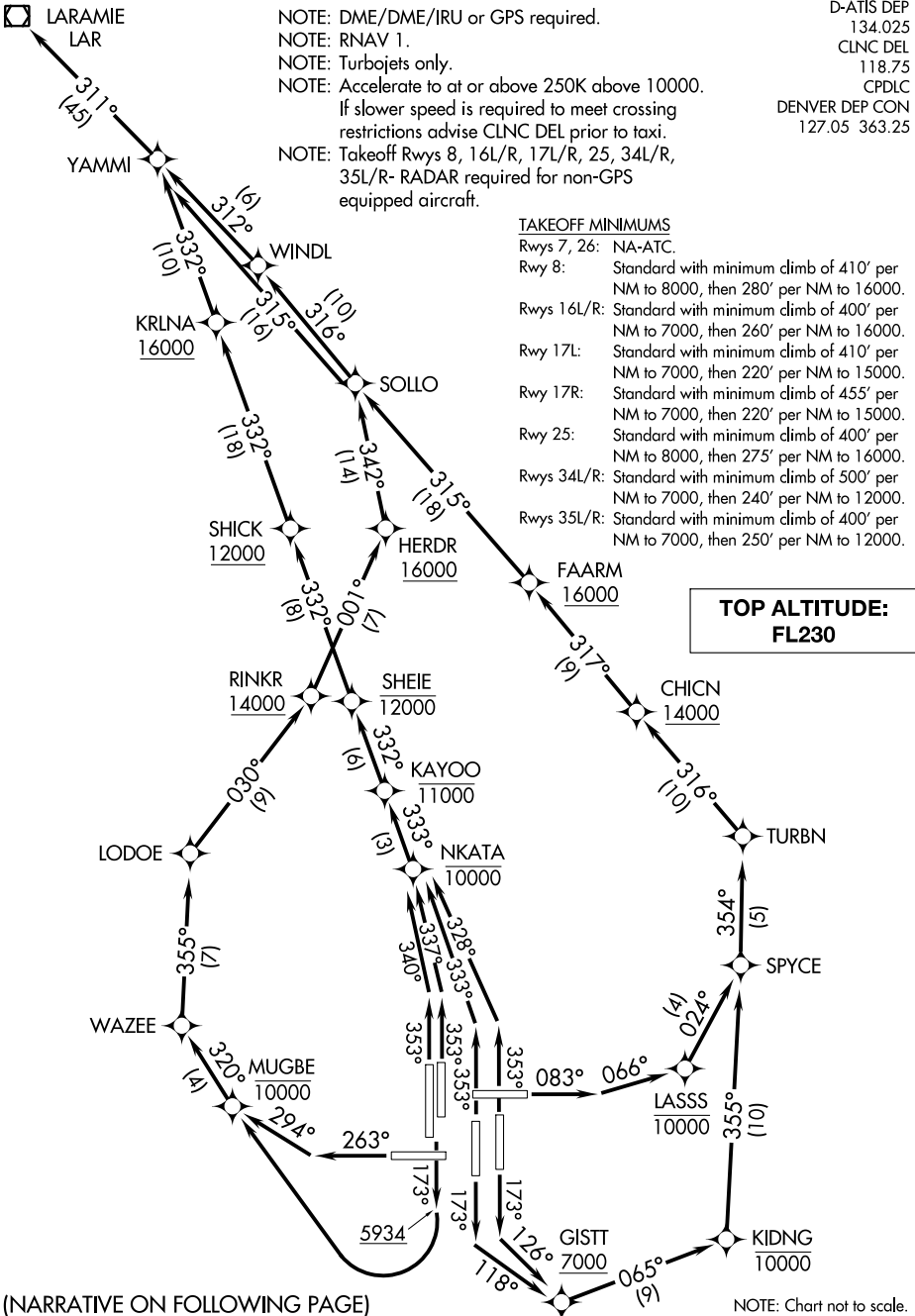


YAMMI FOUR DEPARTURE (RNAV)

AL-9077 (FAA)

DENVER INTL (DEN)
DENVER, COLORADO



NOTE: DME/DME/IRU or GPS required.
 NOTE: RNAV 1.
 NOTE: Turbojets only.
 NOTE: Accelerate to at or above 250K above 10000.
 If slower speed is required to meet crossing restrictions advise CLNC DEL prior to taxi.
 NOTE: Takeoff Rws 8, 16L/R, 17L/R, 25, 34L/R, 35L/R- RADAR required for non-GPS equipped aircraft.

D-ATIS DEP
134.025
CLNC DEL
118.75
CPDLC
DENVER DEP CON
127.05 363.25

TAKEOFF MINIMUMS

Rwys 7, 26: NA-ATC.
 Rwy 8: Standard with minimum climb of 410' per NM to 8000, then 280' per NM to 16000.
 Rwys 16L/R: Standard with minimum climb of 400' per NM to 7000, then 260' per NM to 16000.
 Rwy 17L: Standard with minimum climb of 410' per NM to 7000, then 220' per NM to 15000.
 Rwy 17R: Standard with minimum climb of 455' per NM to 7000, then 220' per NM to 15000.
 Rwy 25: Standard with minimum climb of 400' per NM to 8000, then 275' per NM to 16000.
 Rwys 34L/R: Standard with minimum climb of 500' per NM to 7000, then 240' per NM to 12000.
 Rwys 35L/R: Standard with minimum climb of 400' per NM to 7000, then 250' per NM to 12000.

**TOP ALTITUDE:
FL230**

SW-1, 15 AUG 2019 to 12 SEP 2019

SW-1, 15 AUG 2019 to 12 SEP 2019

(NARRATIVE ON FOLLOWING PAGE)

NOTE: Chart not to scale.

YAMMI FOUR DEPARTURE (RNAV)

DENVER, COLORADO
DENVER INTL (DEN)