

TSHNR THREE ARRIVAL (RNAV)

AL-9077 (FAA)

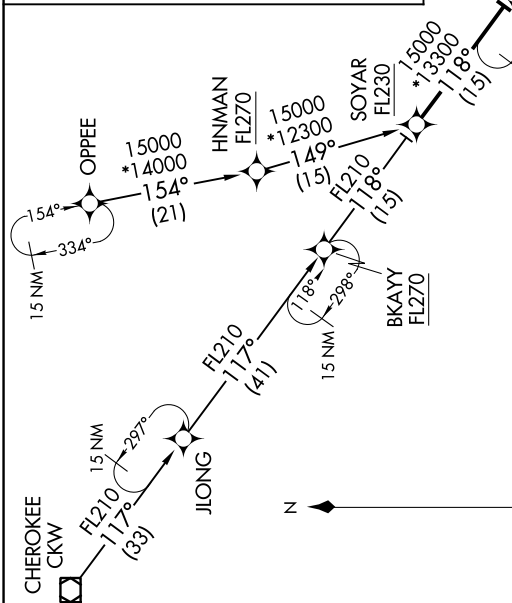
DENVER, COLORADO

SW-1, 15 AUG 2019 to 12 SEP 2019

ARRIVAL ROUTE DESCRIPTION
CHEROKEE TRANSITION (CKW.TSHNR3)
OPPEE TRANSITION (OPPEE.TSHNR3)

From over SOYAR on track 118° to cross MOLTN at or above FL190, then on track 118° to cross WOOKY at or above 17000, then on track 118° to cross RAMMS at or above 17000 and at or below FL190 and at 250K, then on track 102° to cross BSAFE at or below 16000, then on track 103° to cross BDUNN at or above 14000 and at or below 15000 and at 210K, then on track 101° to cross TSHNR at 13000 and at 210K. Expect ILS or visual approach as assigned by ATC.

LOST COMMUNICATIONS: In the event of lost communications prior to runway assignment: aircraft landing DEN execute the ILS RWY 16R; aircraft landing FTG execute the ILS RWY 26; aircraft landing FNL execute the ILS RWY 33; aircraft landing GXY proceed direct WAVDI for the ILS RWY 35.



TSHNR THREE ARRIVAL (RNAV)

DENVER, COLORADO

- DENVER APP CON 119.3 307.3
- DENVER INTL D-ATIS ARR 125.6 379.9
- FRONT RANGE TOWER * 120.2
- FRONT RANGE ATIS 119.025
- NORTHERN COLORADO RGNL CTAF 122.7
- GREELEY-WELD COUNTY CTAF 122.8
- GREELEY-WELD COUNTY WAVEDI
- DENVER INTL
- FRONT RANGE

- NOTE: RADAR required.
- NOTE: RNAV 1.
- NOTE: DME/DME/IRU or GPS required.
- NOTE: Turbojet aircraft only.
- NOTE: Expect runway assignment on initial contact with Denver TRACON.
- NOTE: The corresponding RNAV STAR is MOLTN. Expect MOLTN when Denver is landing north.
- NOTE: Descend via mach number until transition to 280K. Maintain 280K until slowed by the STAR or assigned by ATC.
- NOTE: Aircraft landing FNL/FTG/GXY, expect RADAR vectors to final approach course.

NOTE: Chart not to scale.

SW-1, 15 AUG 2019 to 12 SEP 2019