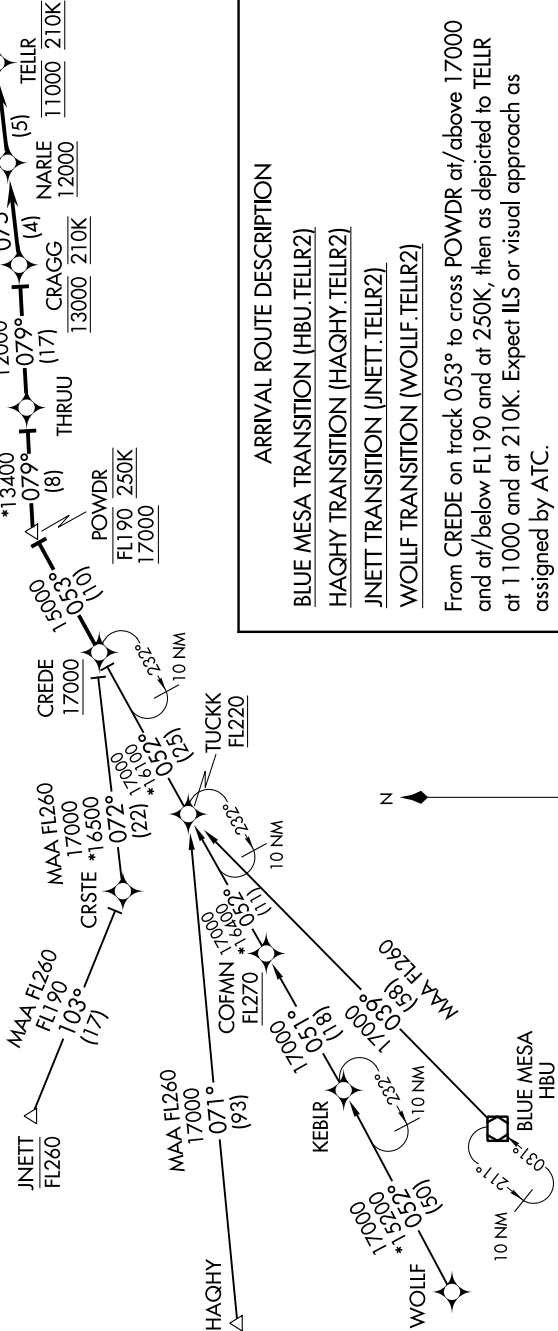


SW-1, 15 AUG 2019 to 12 SEP 2019

DENVER APP CON
120.35 379.3
D-ATIS ARR
125.6 379.9

- NOTE: RADAR required.
- NOTE: RNAV 1.
- NOTE: DME/DME/IRU or GPS required.
- NOTE: Turbojet aircraft only.
- NOTE: Expect runway assignment on initial contact with Denver TRACON.
- NOTE: Corresponding RNAV STAR is CREDE. Expect CREDE when Denver is landing south.
- NOTE: Descend via mach number until transition to 280K. Maintain 280K until slowed by STAR or assigned by ATC.
- NOTE: For non-GPS equipped aircraft using WOLFF, HAQHY and BLUE MESA transitions, HBU and DBL DMEs must be operational.



ARRIVAL ROUTE DESCRIPTION

- BLUE MESA TRANSITION (HBU.TELLR2)
- HAQHY TRANSITION (HAQHY.TELLR2)
- JINETT TRANSITION (JINETT.TELLR2)
- WOLFF TRANSITION (WOLFF.TELLR2)

From CREDE on track 053° to cross POWDER at/above 17000 and at/below FL190 and at 250K, then as depicted to TELLR at 11000 and at 210K. Expect ILS or visual approach as assigned by ATC.

LOST COMMUNICATIONS: In the event of lost communications prior to runway assignment, execute the ILS RWY 34R.

NOTE: Chart not to scale.

SW-1, 15 AUG 2019 to 12 SEP 2019