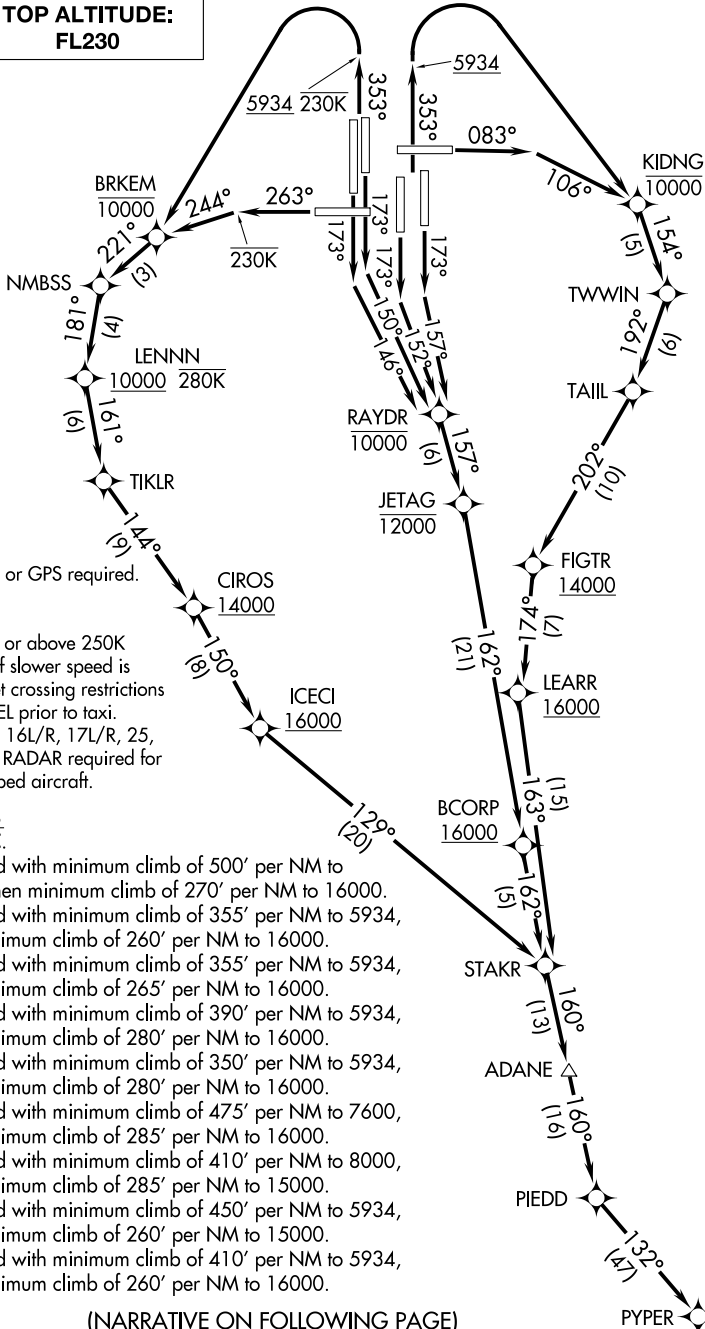


D-ATIS DEP  
134.025  
CLNC DEL  
118.75  
CPDLC  
DENVER DEP CON  
128.45 251.075

**TOP ALTITUDE:  
FL230**



- NOTE: DME/DME/IRU or GPS required.
- NOTE: RNAV 1.
- NOTE: Turbojets only.
- NOTE: Accelerate to at or above 250K above 10000. If slower speed is required to meet crossing restrictions advise CLNC DEL prior to taxi.
- NOTE: Takeoff Rwy 8, 16L/R, 17L/R, 25, 34L/R, 35L/R - RADAR required for non-GPS equipped aircraft.

**TAKEOFF MINIMUMS**

Rwys 7, 26: NA-ATC.

- Rwy 8: Standard with minimum climb of 500' per NM to 5934, then minimum climb of 270' per NM to 16000.
- Rwy 16L: Standard with minimum climb of 355' per NM to 5934, then minimum climb of 260' per NM to 16000.
- Rwy 16R: Standard with minimum climb of 355' per NM to 5934, then minimum climb of 265' per NM to 16000.
- Rwy 17L: Standard with minimum climb of 390' per NM to 5934, then minimum climb of 280' per NM to 16000.
- Rwy 17R: Standard with minimum climb of 350' per NM to 5934, then minimum climb of 280' per NM to 16000.
- Rwy 25: Standard with minimum climb of 475' per NM to 7600, then minimum climb of 285' per NM to 16000.
- Rwys 34L/R: Standard with minimum climb of 410' per NM to 8000, then minimum climb of 285' per NM to 15000.
- Rwy 35L: Standard with minimum climb of 450' per NM to 5934, then minimum climb of 260' per NM to 15000.
- Rwy 35R: Standard with minimum climb of 410' per NM to 5934, then minimum climb of 260' per NM to 16000.

NOTE: Chart not to scale.

(NARRATIVE ON FOLLOWING PAGE)

SW-1, 15 AUG 2019 to 12 SEP 2019

SW-1, 15 AUG 2019 to 12 SEP 2019