

SPAZZ FOUR DEPARTURE (RNAV)

AL-9077 (FAA)

DENVER INTL (DEN)
DENVER, COLORADO

**TOP ALTITUDE:
FL230**

D-ATIS DEP
134.025
CLNC DEL
118.75
CPDLC
DENVER DEP CON
128.45 251.075

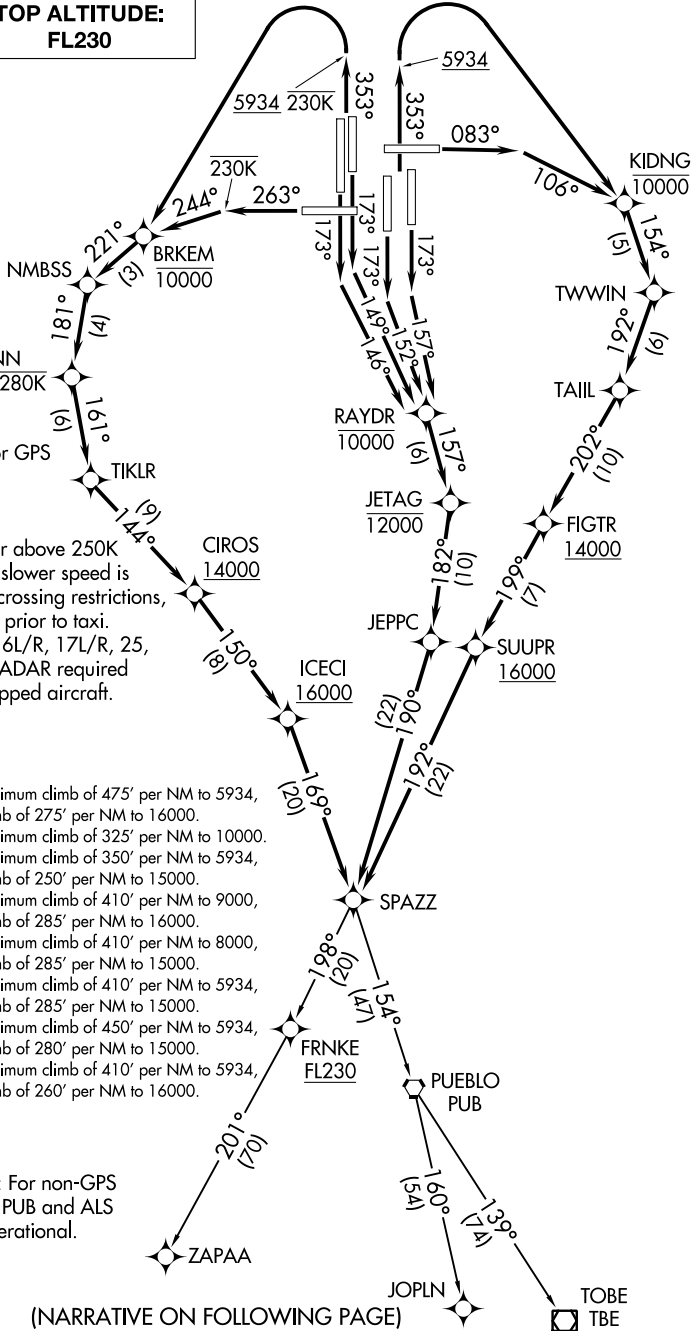
- NOTE: DME/DME/IRU or GPS required.
- NOTE: RNAV 1.
- NOTE: Turbojets only.
- NOTE: Accelerate to at or above 250K above 10000. If slower speed is required to meet crossing restrictions, advise CLNC DEL prior to taxi.
- NOTE: Takeoff Rwy 8, 16L/R, 17L/R, 25, 34L/R, 35L/R - RADAR required for non-GPS equipped aircraft.

TAKEOFF MINIMUMS

- Rwys 7, 26: NA-ATC.
- Rwy 8: Standard with minimum climb of 475' per NM to 5934, then minimum climb of 275' per NM to 16000.
- Rwys 16L/R: Standard with minimum climb of 325' per NM to 10000.
- Rwys 17L/R: Standard with minimum climb of 350' per NM to 5934, then minimum climb of 250' per NM to 15000.
- Rwy 25: Standard with minimum climb of 410' per NM to 9000, then minimum climb of 285' per NM to 16000.
- Rwy 34L: Standard with minimum climb of 410' per NM to 8000, then minimum climb of 285' per NM to 15000.
- Rwy 34R: Standard with minimum climb of 410' per NM to 5934, then minimum climb of 285' per NM to 15000.
- Rwy 35L: Standard with minimum climb of 450' per NM to 5934, then minimum climb of 280' per NM to 15000.
- Rwy 35R: Standard with minimum climb of 410' per NM to 5934, then minimum climb of 260' per NM to 16000.

NOTE: ZAPAA transition: For non-GPS equipped aircraft PUB and ALS DMEs must be operational.

NOTE: Chart not to scale.



SW-1, 15 AUG 2019 to 12 SEP 2019

SW-1, 15 AUG 2019 to 12 SEP 2019

(NARRATIVE ON FOLLOWING PAGE)

SPAZZ FOUR DEPARTURE (RNAV)

(SPAZZ4.SPAZZ) 13SEP18

DENVER, COLORADO
DENVER INTL (DEN)