

SOLAR FOUR DEPARTURE (RNAV)

AL-9077 (FAA)

DENVER INTL (DEN)
DENVER, COLORADO

NOTE: DME/DME/IRU or GPS required.

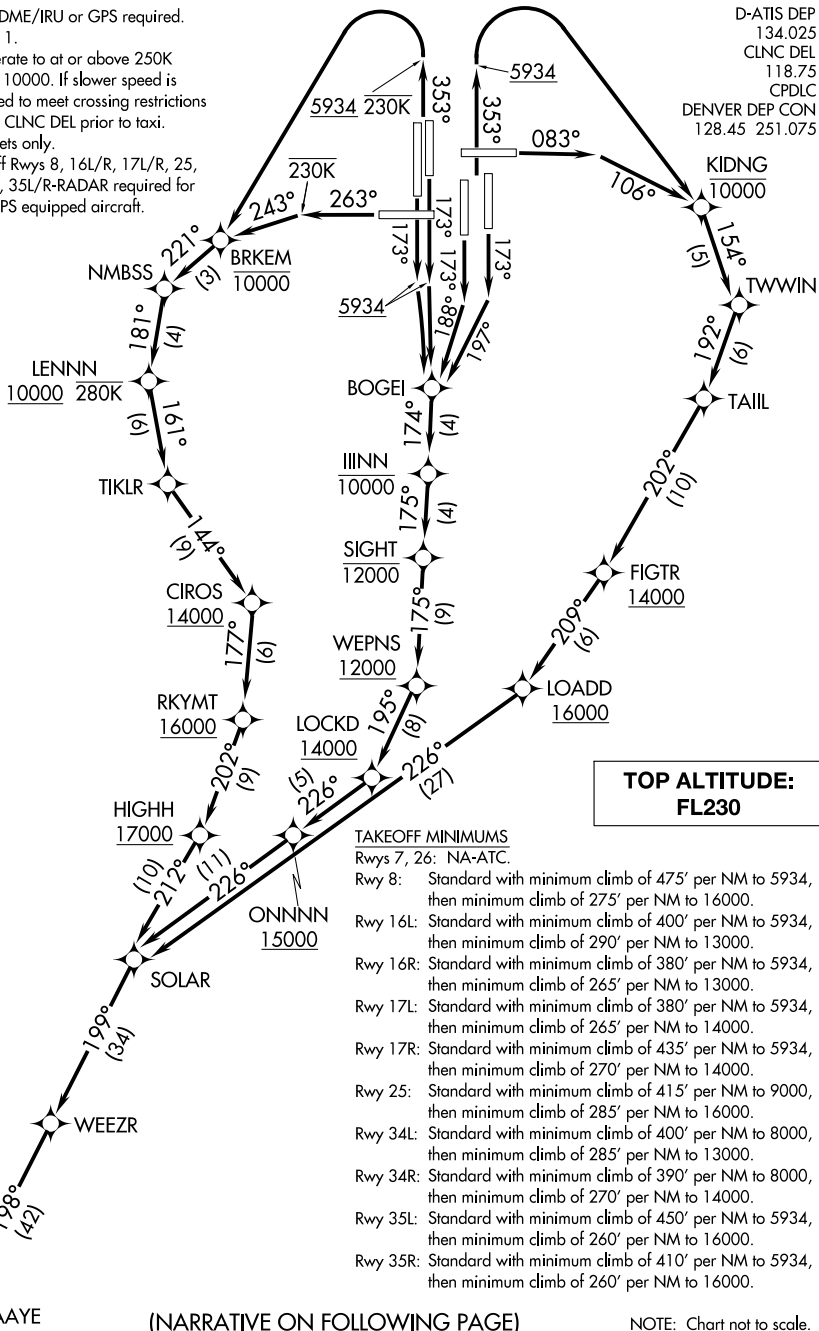
NOTE: RNAV 1.

NOTE: Accelerate to at or above 250K above 10000. If slower speed is required to meet crossing restrictions advise CLNC DEL prior to taxi.

NOTE: Turbojets only.

NOTE: Takeoff Rwy 8, 16L/R, 17L/R, 25, 34L/R, 35L/R-RADAR required for non-GPS equipped aircraft.

D-ATIS DEP
134.025
CLNC DEL
118.75
CPDLC
DENVER DEP CON
128.45 251.075



SW-1, 15 AUG 2019 to 12 SEP 2019

SW-1, 15 AUG 2019 to 12 SEP 2019

(NARRATIVE ON FOLLOWING PAGE)

NOTE: Chart not to scale.

SOLAR FOUR DEPARTURE (RNAV)

(SOLAR4.DAAAYE) 13SEP18

DENVER, COLORADO
DENVER INTL (DEN)