

WAAS CH 90318 W34B	APP CRS 353°	Rwy Idg 12000 TDZE 5354 Apt Elev 5434
--	------------------------	--

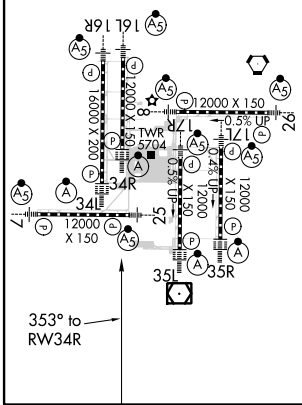
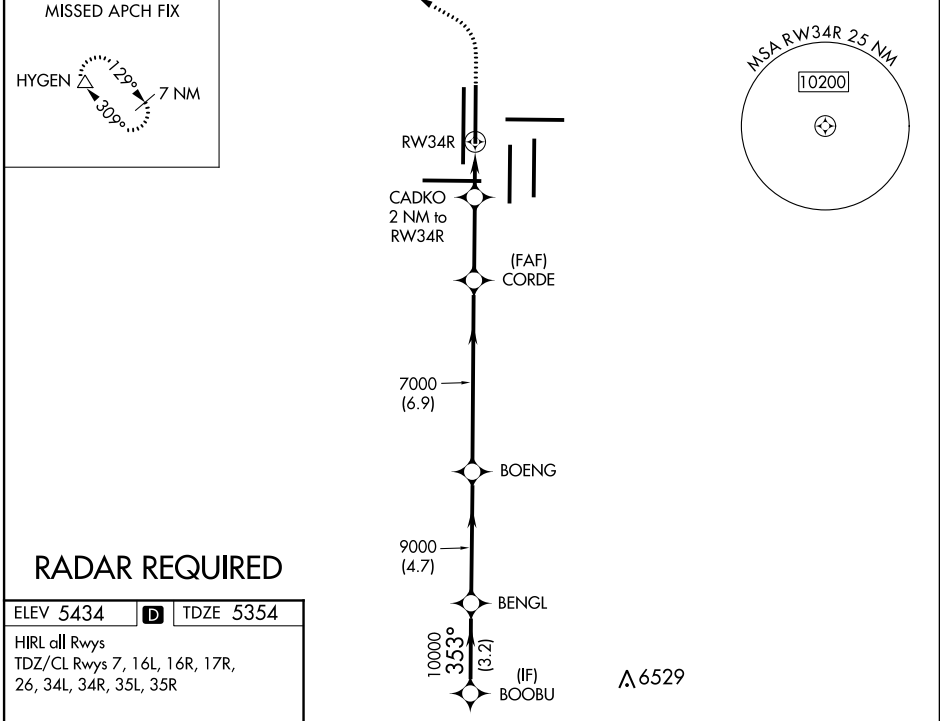
RNAV (GPS) Y RWY 34R

DENVER INTL (DEN)

▼ For uncompensated Baro-VNAV systems, LNAV/VNAV NA below -25°C (-13°F) or above 46°C (114°F). DME/DME RNP-0.3 NA. LNAV procedure NA during simultaneous operations. Simultaneous approach authorized with Rwy 35L/R. Use of FD or AP providing RNAV track guidance required during simultaneous operations.

ALSF-2
MISSED APPROACH: Climb to 6000 then climbing left turn to 10000 direct HYGEM and hold.

D-ATIS ARR 125.6 379.9 DEP 134.025	DENVER APP CON 119.3 307.3 (NORTH) 120.35 379.3 (SOUTH)	DENVER TOWER 135.3 351.95	GND CON 127.5 379.175	CLNC DEL 118.75	CPDLC
--	---	-------------------------------------	---------------------------------	---------------------------	-------



VGSi and RNAV glidepath not coincident (VGSi Angle 3.00/TCH 63).		6000	10000	HYGEM
BOOBU	BENGL	BOENG	CORDE	CADKO
10000	9000	7000	7000	2 NM to RWY 34R
GP 3.00°	TCH 59	*6040	*LNAV only	
	3.2 NM	4.7 NM	6.9 NM	3 NM
2 NM				
CATEGORY	A	B	C	D
LPV DA		5554/18	200 (200-½)	
LNAV/VNAV DA		5838/60	484 (500-1¼)	
LNAV MDA	5940/24	586 (600-½)	5940-1¼	586 (600-1¼)

SW-1, 15 AUG 2019 to 12 SEP 2019

SW-1, 15 AUG 2019 to 12 SEP 2019