


APP CRS	Rwy Idg	12000
082°	TDZE	5354
	Apt Elev	5434

RNAV (RNP) Z RWY 8

DENVER INTL (DEN)

GPS required. For inoperative MALSR, increase RNP 0.10 all Cats visibility to RVR 6000 and RNP 0.30 all Cats visibility to 1 $\frac{3}{8}$ mile. Simultaneous approach authorized with Rwy 7, except for arrivals at BERNZ and BBOOK. Use of FD or AP providing RNAV track guidance required during simultaneous operations. For uncompensated Baro-VNAV systems, procedure NA below -25°C (-13°F) or above 47°C (117°F).

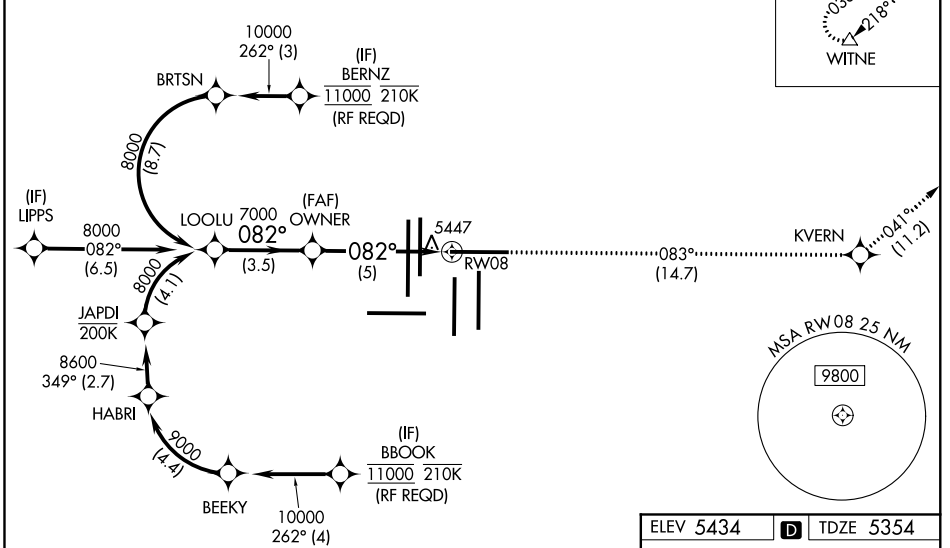
MALSR



MISSED APPROACH:
Climb to 10000 on track 083° to KVERN and on track 041° to WITNE and hold.

D-ATIS	DENVER APP CON		DENVER TOWER		GND CON	CLNC DEL	CPDLC
ARR 125.6 379.9	119.3	307.3	120.35	379.3	121.85 377.1	118.75	
DEP 134.025	(NORTH)	(SOUTH)					

RADAR REQUIRED



SW-1, 15 AUG 2019 to 12 SEP 2019

SW-1, 15 AUG 2019 to 12 SEP 2019

