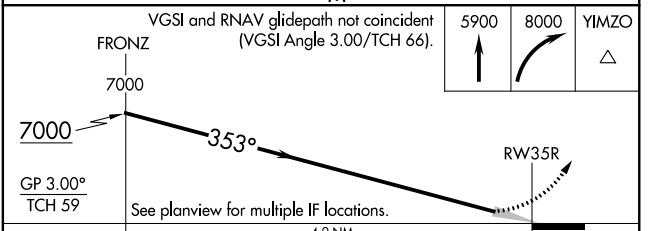
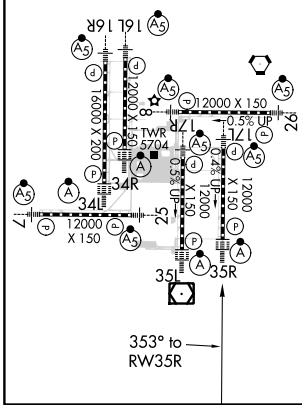
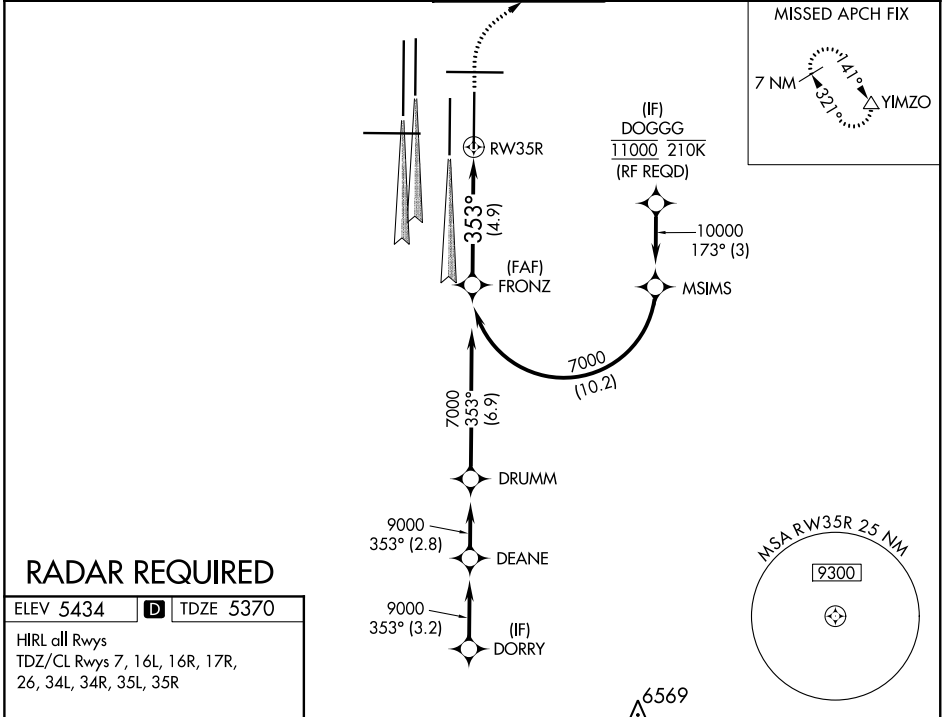


APP CRS <b>353°</b>	Rwy Idg <b>12000</b> TDZE <b>5370</b> Apt Elev <b>5434</b>
------------------------	--

# RNAV (RNP) Z RWY 35R

DENVER INTL (DEN)

<p><b>▽</b> For uncompensated Baro-VNAV systems, procedure NA below -25°C (-13°F) or above 45°C (114°F). GPS required. For inoperative ALSF, increase RNP 0.10 all Cats visibility to RVR 4500 and RNP 0.30 all Cats visibility to RVR 5000. Simultaneous approach authorized. Use of FD or AP providing RNAV track required during simultaneous operations.</p>		<p>ALSF-2</p>	<p>MISSED APPROACH: Climb to 5900, then climbing right turn to 8000 direct YIMZO and hold.</p>		
D-ATIS ARR <b>125.6 379.9</b> DEP <b>134.025</b>	DENVER APP CON <b>119.3 307.3 120.35 379.3</b> (NORTH) (SOUTH)	DENVER TOWER <b>132.35 239.275</b>	GND CON <b>121.85 377.1</b>	CLNC DEL <b>118.75</b>	CPDLC



CATEGORY	A	B	C	D
RNP 0.10 DA	5631/24 261 (200-1/2)			
RNP 0.30 DA	5702/32 332 (300-5/8)			

## AUTHORIZATION REQUIRED

SW-1, 15 AUG 2019 to 12 SEP 2019

SW-1, 15 AUG 2019 to 12 SEP 2019