

APP CRS 353°	Rwy Idg TDZE Apt Elev	12000 5434 5434
------------------------	-----------------------------	--

RNAV (RNP) Z RWY 35L

DENVER INTL (DEN)

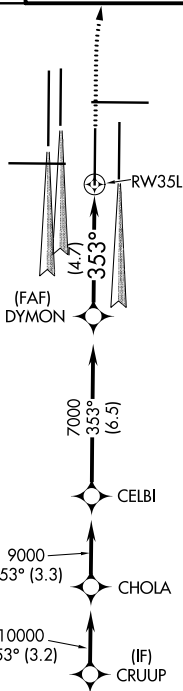
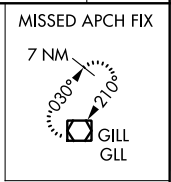
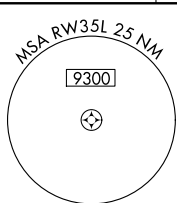
▽ For uncompensated Baro-VNAV systems, procedure NA below -25°C (-13°F) or above 46°C (115°F). GPS required. For inoperative ALSF, increase RNP 0.10 all Cats visibility to RVR 4500 and RNP 0.30 all Cats visibility to RVR 5000. Simultaneous approach authorized. Use of FD or AP providing RNAV track guidance required during simultaneous operations.

ALSF-2



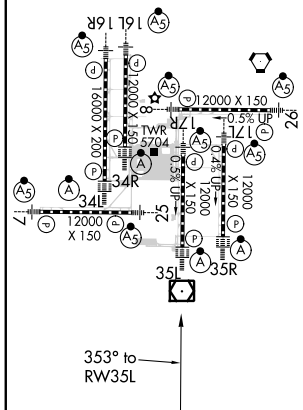
MISSED APPROACH: Climb to 10000, then right turn direct GLL VOR/DME and hold.

D-ATIS ARR 125.6 379.9 DEP 134.025	DENVER APP CON 119.3 307.3 (NORTH)	120.35 379.3 (SOUTH)	DENVER TOWER 133.3 322.45	GND CON 121.85 377.1	CLNC DEL 118.75	CPDLC
--	---	--------------------------------	-------------------------------------	--------------------------------	---------------------------	-------



RADAR REQUIRED

ELEV 5434	D	TDZE 5434
HIRL all Rwys TDZ/CL Rwys 7, 16L, 16R, 17R, 26, 34L, 34R, 35L, 35R		



DYMON	10000	GLL		
7000	↑	↘		
VGSi and RNAV glidepath not coincident (VGSi Angle 3.00/TCH 71).				
7000	↘ 353°	RW35L		
GP 3.00°	4.7 NM			
TCH 57				
CATEGORY	A	B	C	D
RNP 0.10 DA		5695/24	261 (300-½)	
RNP 0.30 DA		5760/32	326 (400-⅝)	
AUTHORIZATION REQUIRED				

SW-1, 15 AUG 2019 to 12 SEP 2019

SW-1, 15 AUG 2019 to 12 SEP 2019