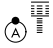


# RNAV (RNP) Z RWY 34L

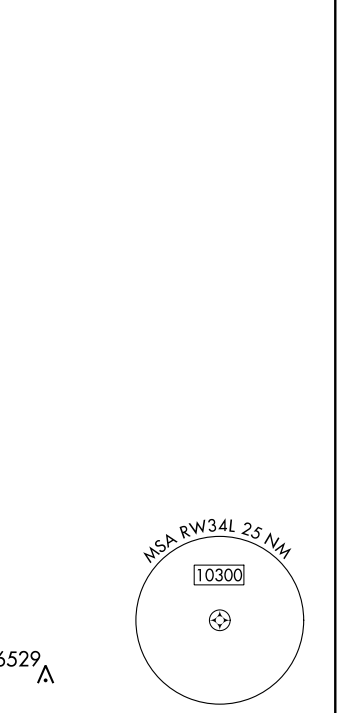
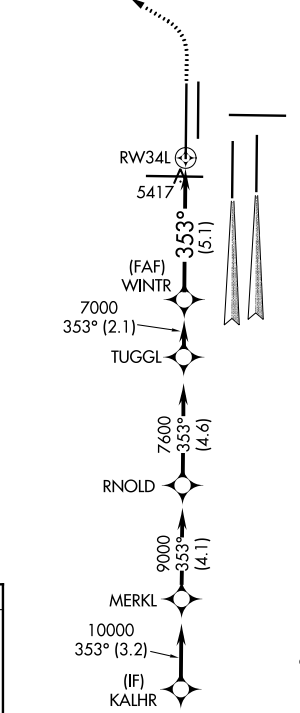
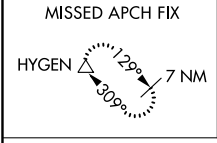
DENVER INTL (DEN)

APP CRS <b>353°</b>	Rwy Idg <b>16000</b>
	TDZE <b>5327</b>
	Apt Elev <b>5434</b>

▼ For uncompensated Baro-VNAV systems, procedure NA below -25°C (-13°F) or above 48°C (118°F). GPS required. For inoperative ALSF, increase RNP 0.10 all Cats visibility to RVR 4500 and RNP 0.20 all Cats visibility to RVR 6000 and RNP 0.30 all Cats visibility to 1½ mile. Simultaneous approach authorized. Use of FD or AP providing RNAV track guidance required during simultaneous operations.

ALSF-2  MISSED APPROACH: Climb to 5900 then climbing left turn to 10000 direct HYGEM and hold.

D-ATIS ARR <b>125.6 379.9</b> DEP <b>134.025</b>	DENVER APP CON <b>119.3 307.3</b> (NORTH) <b>120.35 379.3</b> (SOUTH)	DENVER TOWER <b>135.3 351.95</b>	GND CON <b>127.5 379.175</b>	CLNC DEL <b>118.75</b>	CPDLC
--	---	-------------------------------------	---------------------------------	---------------------------	-------



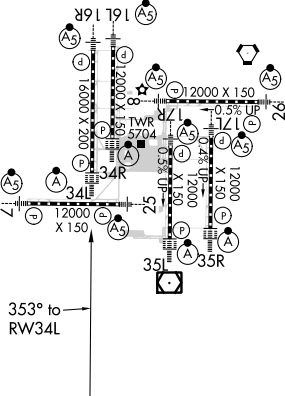
SW-1, 15 AUG 2019 to 12 SEP 2019

SW-1, 15 AUG 2019 to 12 SEP 2019

## RADAR REQUIRED


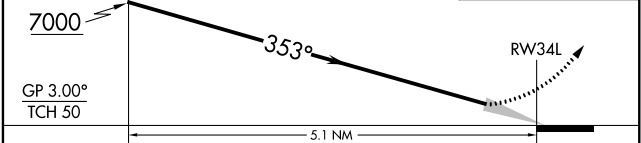
ELEV <b>5434</b>	<b>D</b>	TDZE <b>5327</b>
------------------	----------	------------------

HIRL all Rwys  
TDZ/CL Rwys 7, 16L, 16R, 17R, 26, 34L, 34R, 35L, 35R



353° to RWY34L

WINTR VGSi and RNAV glidepath not coincident (VGSi Angle 3.00/TCH 70). 5900 10000 HYGEM

GP 3.00° TCH 50				
	A	B	C	D
RNP 0.10 DA		5587/24	260 (200-½)	
RNP 0.20 DA		5720/45	393 (300-¾)	
RNP 0.30 DA		5782/60	455 (400-1¼)	

## AUTHORIZATION REQUIRED