

APP CRS 263°	Rwy Idg TDZE Apt Elev	12000 5309 5434
------------------------	-----------------------------	--

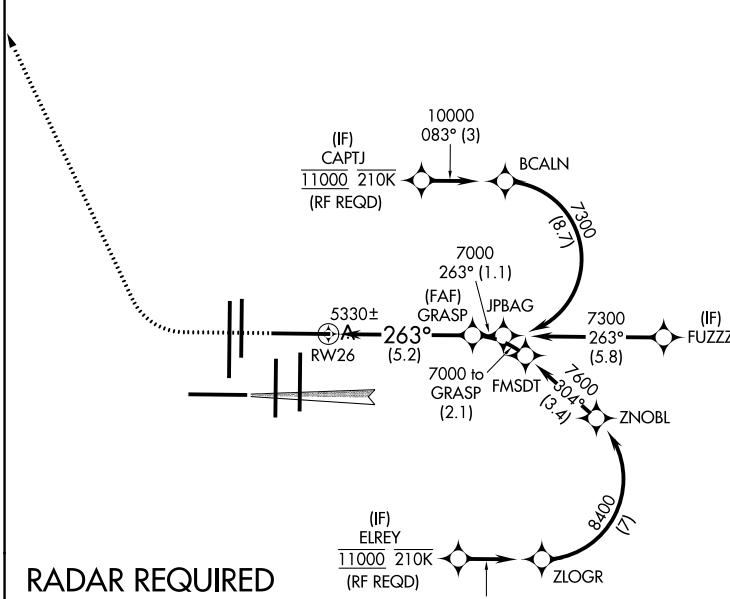
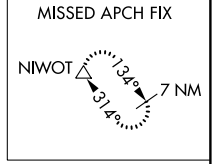
RNAV (RNP) Z RWY 26

DENVER INTL (DEN)

For uncompensated Baro-VNAV systems, procedure NA below -25°C (-13°F) or above 46°C (116°F). For inoperative MALSR, increase RNP 0.10 all Cats visibility to RVR 4500 and RNP 0.30 all Cats visibility to RVR 6000. Simultaneous approach authorized with Rwy 25, except for arrivals at CAPTJ and ELREY. Use of FD or AP providing RNAV track guidance required during simultaneous operations. GPS required.

MALSRL
MISSED APPROACH:
Climb to 6000 then
climbing right turn to 10000
direct NIWOT and hold.

D-ATIS ARR 125.6 379.9 DEP 134.025	DENVER APP CON 119.3 307.3 (NORTH) 120.35 379.3 (SOUTH)	DENVER TOWER 132.35 239.275	GND CON 121.85 377.1	CLNC DEL 118.75	CPDLC
--	---	---------------------------------------	--------------------------------	---------------------------	-------

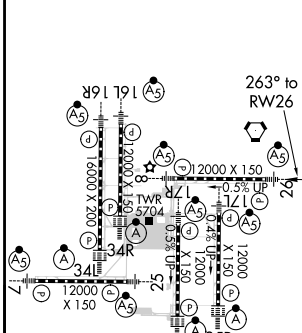


SW-1, 15 AUG 2019 to 12 SEP 2019

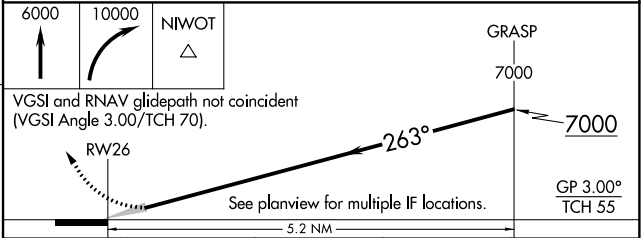
SW-1, 15 AUG 2019 to 12 SEP 2019

RADAR REQUIRED

ELEV 5434	D	TDZE 5309
-----------	----------	-----------



HIRL all Rwys
TDZ/CL Rwys 7, 16L, 16R, 17R,
26, 34L, 34R, 35L, 35R



CATEGORY	A	B	C	D
RNP 0.10 DA		5570/24	261 (200-½)	
RNP 0.30 DA		5668/40	359 (300-¾)	

AUTHORIZATION REQUIRED