


APP CRS 263°	Rwy Idg 12000
	TDZE 5355
	Apt Elev 5434

RNAV (RNP) Z RWY 25

DENVER INTL (DEN)

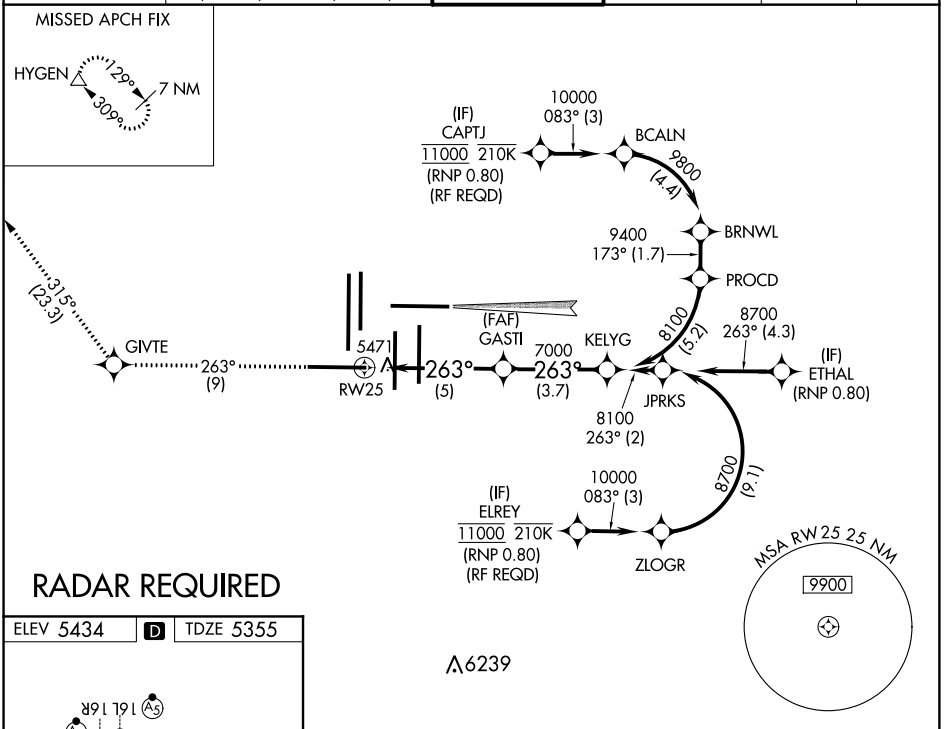
GPS required. For inoperative MALSR, increase RNP 0.10 all Cats visibility to RVR 6000 and RNP 0.30 all Cats visibility to 1 3/8 mile. Simultaneous approach authorized with Rwy 26, except for arrivals at CAPTJ and ELREY. Use of FD or AP providing RNAV track guidance required during simultaneous operations. For uncompensated Baro-VNAV systems, procedure NA below -25° (-13°F) or above 46°C (116°F).

MALSR



MISSED APPROACH: Climb to 10000 on track 263° to GIVTE and on track 315° to HYGEN and hold.

D-ATIS ARR 125.6 379.9 DEP 134.025	DENVER APP CON 119.3 307.3 120.35 379.3 (NORTH) (SOUTH)	DENVER TOWER 128.75 273.55	GND CON 127.5 379.175	CLNC DEL 118.75	CPDLC
--	--	--------------------------------------	---------------------------------	---------------------------	-------

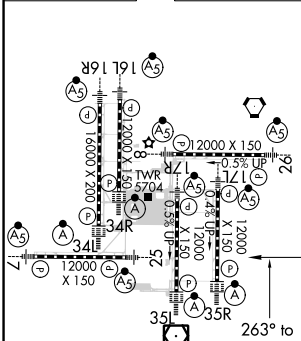


SW-1, 15 AUG 2019 to 12 SEP 2019

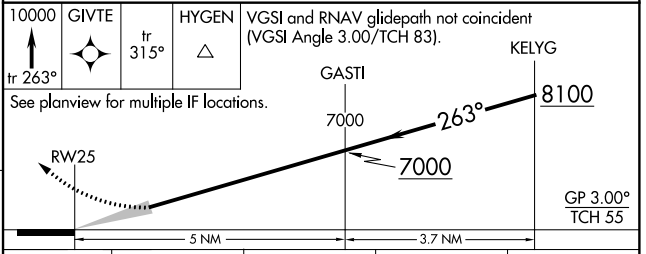
SW-1, 15 AUG 2019 to 12 SEP 2019

RADAR REQUIRED

ELEV 5434	D	TDZE 5355
-----------	----------	-----------



HIRL all Rwys
TDZ/CL Rwys 7, 16L, 16R, 17R,
26, 34L, 34R, 35L, 35R



CATEGORY	A	B	C	D
RNP 0.10 DA		5743/40	388 (400-3/4)	
RNP 0.30 DA		5783/50	428 (400-1)	

AUTHORIZATION REQUIRED