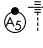


APP CRS <b>173°</b>	Rwy Idg <b>12000</b>
	TDZE <b>5392</b>
	Apt Elev <b>5434</b>

# RNAV (RNP) Z RWY 17R

DENVER INTL (DEN)

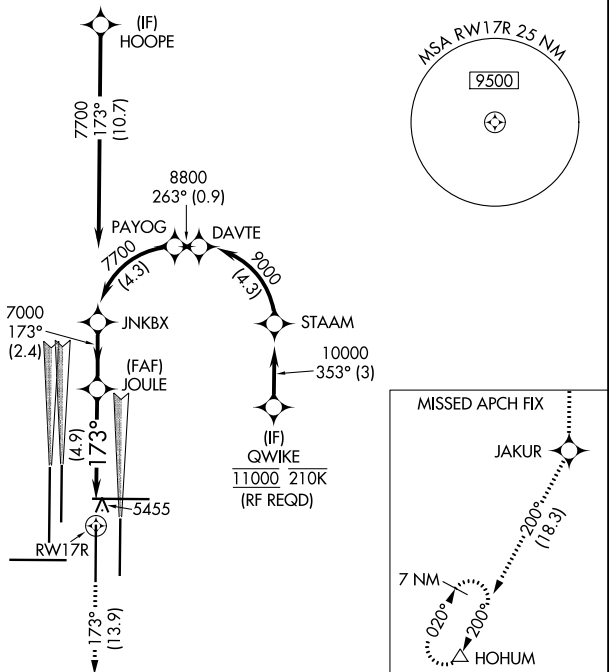
**▽** GPS required. For inoperative MALSR, increase RNP 0.10 all Cats visibility to RVR 5000 and RNP 0.30 all Cats visibility to 1 1/2 mile. Simultaneous approach authorized. Use of FD or AP providing RNAV track guidance required during simultaneous operations. For uncompensated Baro-VNAV systems, procedure NA below -25°C (-13°F) or above 45°C (114°F).

**MALSR**  
  
**MISSED APPROACH:** Climb to 10000 on track 173° to JAKUR and on track 200° to HOHUM and hold.

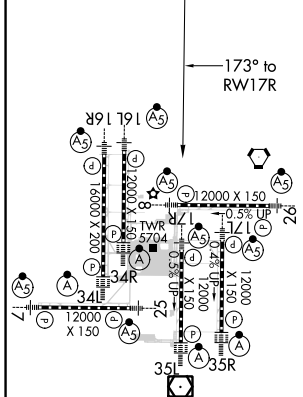
D-ATIS ARR <b>125.6 379.9</b> DEP <b>134.025</b>	DENVER APP CON <b>119.3 307.3</b> (NORTH) <b>120.35 379.3</b> (SOUTH)	DENVER TOWER <b>133.3 322.45</b>	GND CON <b>121.85 377.1</b>	CLNC DEL <b>118.75</b>	CPDLC
--	---	-------------------------------------	--------------------------------	---------------------------	-------

## RADAR REQUIRED

A6260

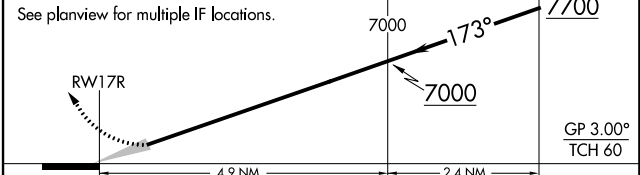


ELEV 5434	<b>D</b>	TDZE 5392
-----------	----------	-----------



HIRL all Rwys  
 TDZ/CL Rwys 7, 16L, 16R, 17R,  
 26, 34L, 34R, 35L, 35R

10000	JAKUR	tr 200°	HOHUM	VGSI and RNAV glidepath not coincident (VGSI Angle 3.00°/TCH 69°).
-------	-------	---------	-------	--



CATEGORY	A	B	C	D
RNP 0.10 DA	5722/32 330 (300-5/8)			
RNP 0.30 DA	5894/60 502 (500-1 1/4)			

## AUTHORIZATION REQUIRED