


APP CRS <b>173°</b>	Rwy Idg <b>12000</b>
	TDZE <b>5339</b>
	Apt Elev <b>5434</b>

# RNAV (RNP) Z RWY 17L

DENVER INTL (DEN)

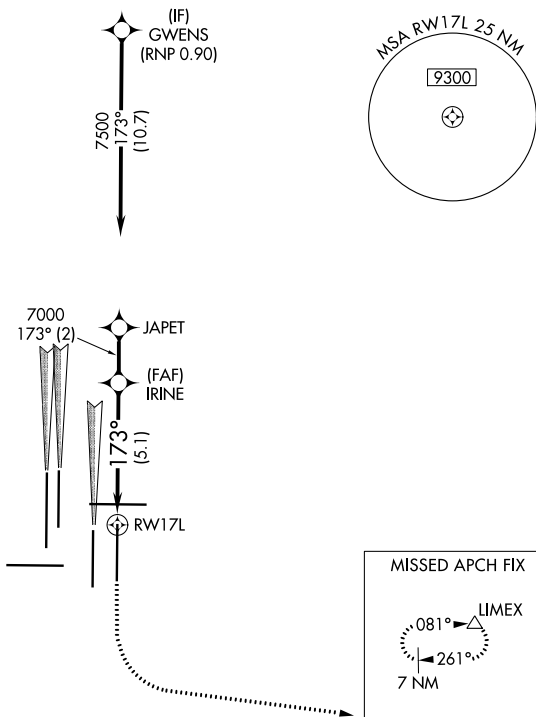
**GPS required.** For inoperative MALSR, increase RNP 0.10 all Cats visibility to RVR 4500 and RNP 0.30 all Cats visibility to RVR 6000. Simultaneous approach authorized. Use of FD or AP providing RNAV track guidance required during simultaneous operations. For uncompensated Baro-VNAV systems, procedure NA below -25°C (-13°F) or above 48°C (118°F).

**MALSR**  
  
**MISSED APPROACH:** Climb to 5900 then climbing left turn to 10000 direct LIMEX and hold.

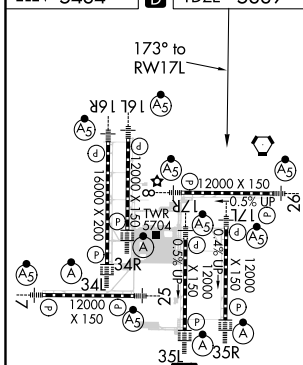
D-ATIS ARR <b>125.6 379.9</b> DEP <b>134.025</b>	DENVER APP CON <b>119.3 307.3</b> (NORTH) <b>120.35 379.3</b> (SOUTH)	DENVER TOWER <b>132.35 239.275</b>	GND CON <b>121.85 377.1</b>	CLNC DEL <b>118.75</b>	CPDLC
--	---	---------------------------------------	--------------------------------	---------------------------	-------

## RADAR REQUIRED

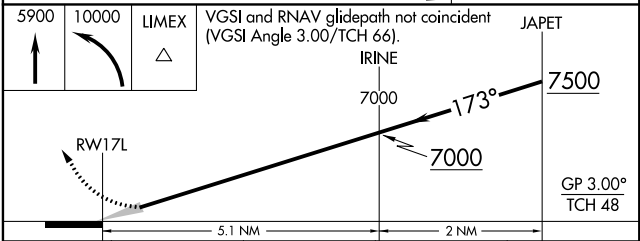
△ 6260



ELEV 5434	<b>D</b>	TDZE 5339
-----------	----------	-----------



HIRL all Rwys  
 TDZ/CL Rwys 7, 16L, 16R, 17R,  
 26, 34L, 34R, 35L, 35R



CATEGORY	A	B	C	D
RNP 0.10 DA		5600/24	261 (200-½)	
RNP 0.30 DA		5716/40	377 (300-¾)	

## AUTHORIZATION REQUIRED