

RIKKK FOUR DEPARTURE (RNAV)

AL-9077 (FAA)

DENVER INTL (DEN)
DENVER, COLORADO

D-ATIS DEP
134.025
CLNC DEL
118.75
CPDLC
DENVER DEP CON
127.05 363.25

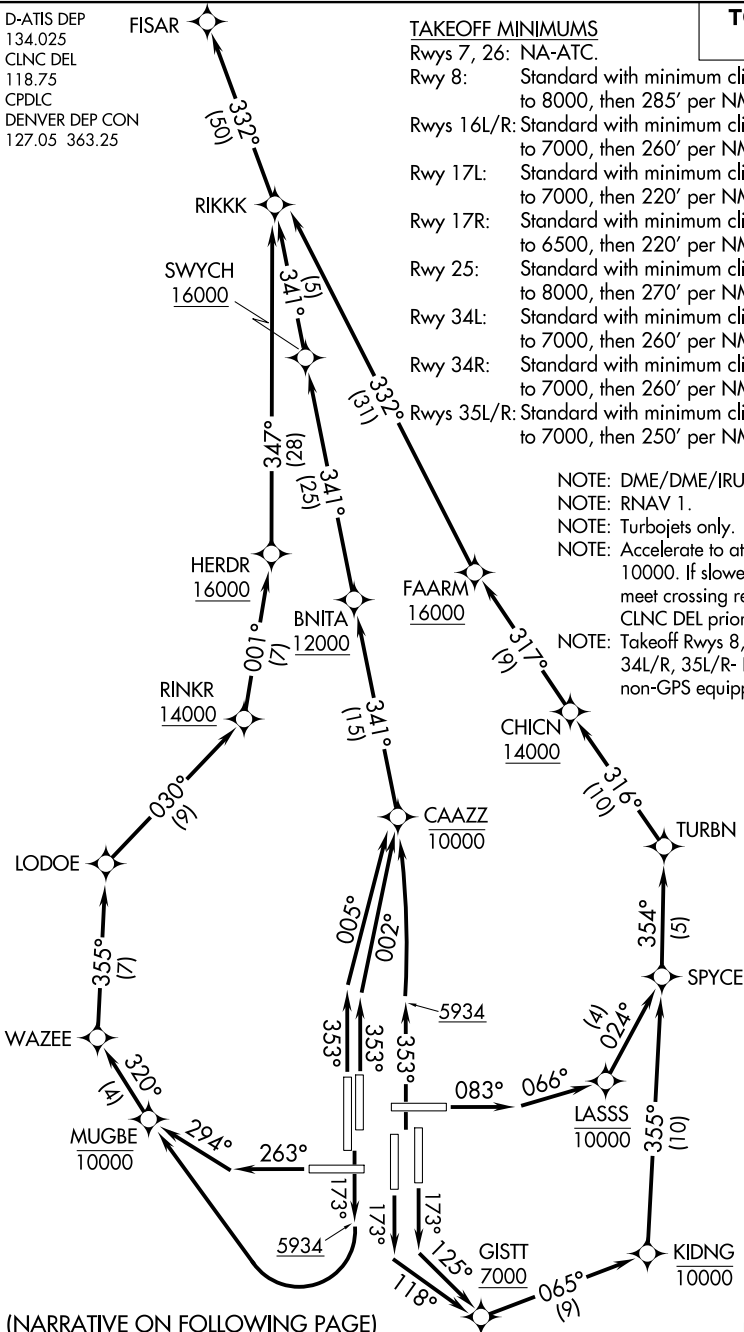
TAKEOFF MINIMUMS

Rwys 7, 26: NA-ATC.

- Rwy 8: Standard with minimum climb of 400' per NM to 8000, then 285' per NM to 15000.
- Rwys 16L/R: Standard with minimum climb of 400' per NM to 7000, then 260' per NM to 16000.
- Rwy 17L: Standard with minimum climb of 400' per NM to 7000, then 220' per NM to 15000.
- Rwy 17R: Standard with minimum climb of 455' per NM to 6500, then 220' per NM to 15000.
- Rwy 25: Standard with minimum climb of 425' per NM to 8000, then 270' per NM to 16000.
- Rwy 34L: Standard with minimum climb of 425' per NM to 7000, then 260' per NM to 12000.
- Rwy 34R: Standard with minimum climb of 430' per NM to 7000, then 260' per NM to 12000.
- Rwys 35L/R: Standard with minimum climb of 400' per NM to 7000, then 250' per NM to 12000.

TOP ALTITUDE:
FL230

NOTE: DME/DME/IRU or GPS required.
NOTE: RNAV 1.
NOTE: Turbojets only.
NOTE: Accelerate to at or above 250K above 10000. If slower speed is required to meet crossing restrictions advise CLNC DEL prior to taxi.
NOTE: Takeoff Rwys 8, 16L/R, 17L/R, 25, 34L/R, 35L/R- RADAR required for non-GPS equipped aircraft.



(NARRATIVE ON FOLLOWING PAGE)

NOTE: Chart not to scale.

RIKKK FOUR DEPARTURE (RNAV)

DENVER, COLORADO
DENVER INTL (DEN)

SW-1, 15 AUG 2019 to 12 SEP 2019

SW-1, 15 AUG 2019 to 12 SEP 2019