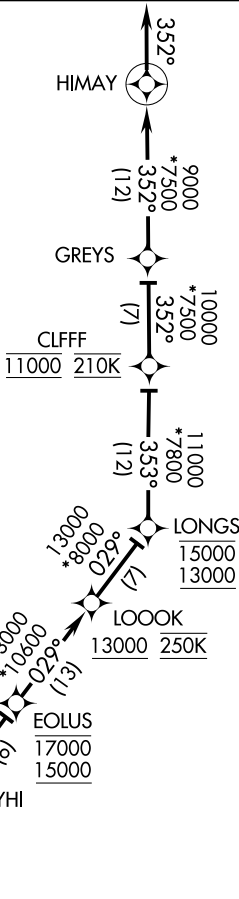


DENVER APP CON
120.35 379.3
D-ATIS ARR
125.6 379.9

- NOTE: RADAR required.
- NOTE: RNAV 1.
- NOTE: DME/DME/IRU or GPS required.
- NOTE: Turbojet aircraft only.
- NOTE: Expect runway assignment on initial contact with Denver TRACON.
- NOTE: Corresponding RNAV STAR is LDORA. Expect LDORA when Denver is landing north.
- NOTE: Descend via mach number until transition to 280K. Maintain 280K until slowed by STAR or assigned by ATC.



SW-1, 15 AUG 2019 to 12 SEP 2019

SW-1, 15 AUG 2019 to 12 SEP 2019

ARRIVAL ROUTE DESCRIPTION

From FREZE on track 037° to cross PEEKK at/above 17000, then as depicted to HIMAY, then on track 352°. Expect RADAR vectors to final approach course.

LOST COMMUNICATIONS

In the event of lost communications prior to runway assignment, execute the ILS RWY 16R.

NOTE: Chart not to scale.