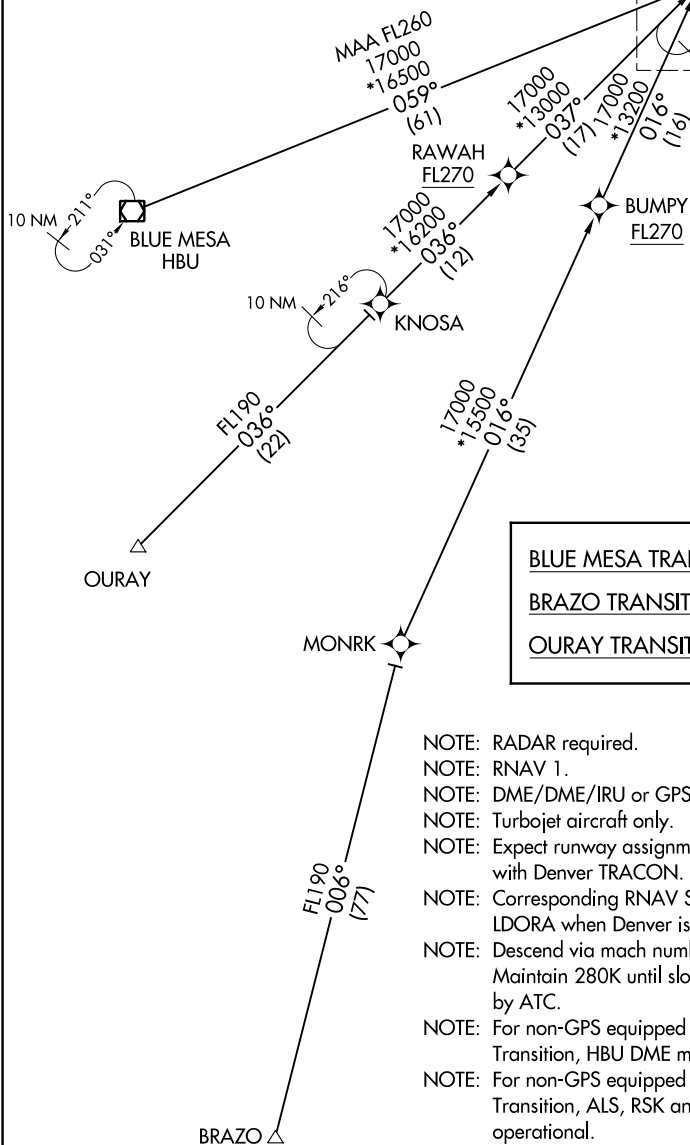


DENVER APP CON
120.35 379.3
D-ATIS ARR
125.6 379.9

See following page
for Arrival Route.

FREZE
FL200



BLUE MESA TRANSITION (HBU.PEEKK3)
BRAZO TRANSITION (BRAZO.PEEKK3)
OURAY TRANSITION (OURAY.PEEKK3)

- NOTE: RADAR required.
- NOTE: RNAV 1.
- NOTE: DME/DME/IRU or GPS required.
- NOTE: Turbojet aircraft only.
- NOTE: Expect runway assignment on initial contact with Denver TRACON.
- NOTE: Corresponding RNAV STAR is LDORA. Expect LDORA when Denver is landing north.
- NOTE: Descend via mach number until transition to 280K. Maintain 280K until slowed by STAR or assigned by ATC.
- NOTE: For non-GPS equipped aircraft using BLUE MESA Transition, HBU DME must be operational.
- NOTE: For non-GPS equipped aircraft using BRAZO Transition, ALS, RSK and PUB DMEs must be operational.

(CONTINUED ON FOLLOWING PAGE)

NOTE: Chart not to scale.

SW-1, 15 AUG 2019 to 12 SEP 2019

SW-1, 15 AUG 2019 to 12 SEP 2019