

LARKS ONE ARRIVAL

AL-9077 (FAA)

DENVER, COLORADO

DENVER APP CON
120.35 379.3
BUCKLEY AFB ATIS
119.675 259.3
CENTENNIAL ATIS
120.3
DENVER INTL D-ATIS ARR
125.6 379.9
FRONT RANGE ATIS
119.025
ROCKY MOUNTAIN METROPOLITAN ATIS
126.25

GILL
114.2 GLL
Chan 89
N40°30.23'-W104°33.18'

DENVER
117.9 DEN
Chan 126
N39°48.75'-W104°39.64'

JEFFCO
115.4 BJC
Chan 101

CENTENNIAL
108.2 APA
Chan 101

RED TABLE
113.0 DBL
Chan 77

LARKS
N39°15.44'-W105°18.31'
TURBOJET VERTICAL NAVIGATION
PLANNING INFORMATION
Expect 17000 250K
or as assigned by ATC.

PAYDD
N39°24.10'
W105°04.73'

TERRO
N38°53.47'
W105°52.38'

MURFE
N39°08.29'
W105°29.47'

FALCON
116.3 FQF
Chan 110
N39°41.41'
W104°37.26'

BLACK FOREST
112.5 BRK
Chan 72

BLUE MESA
114.9 HBU
Chan 96
N38°27.13'-W107°02.38'

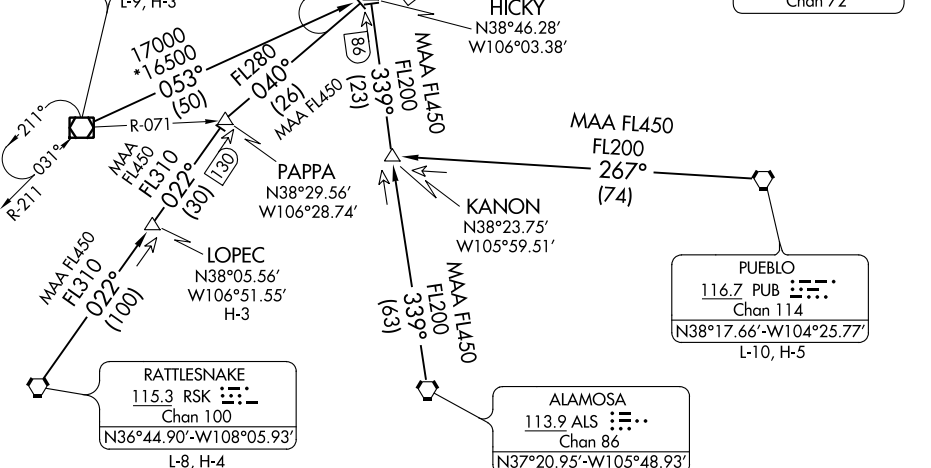
HICKY
N38°46.28'
W106°03.38'

MAA FL450
FL200
267°
(74)

PUEBLO
116.7 PUB
Chan 114
N38°17.66'-W104°25.77'

RATTLESNAKE
115.3 RSK
Chan 100
N36°44.90'-W108°05.93'

ALAMOSA
113.9 ALS
Chan 86
N37°20.95'-W105°48.93'



NOTE: Adjacent STAR is POWDR ARRIVAL.
NOTE: RADAR required.
NOTE: Chart not to scale.

(NARRATIVE ON FOLLOWING PAGE)

SW-1, 15 AUG 2019 to 12 SEP 2019

SW-1, 15 AUG 2019 to 12 SEP 2019

LARKS ONE ARRIVAL

DENVER, COLORADO