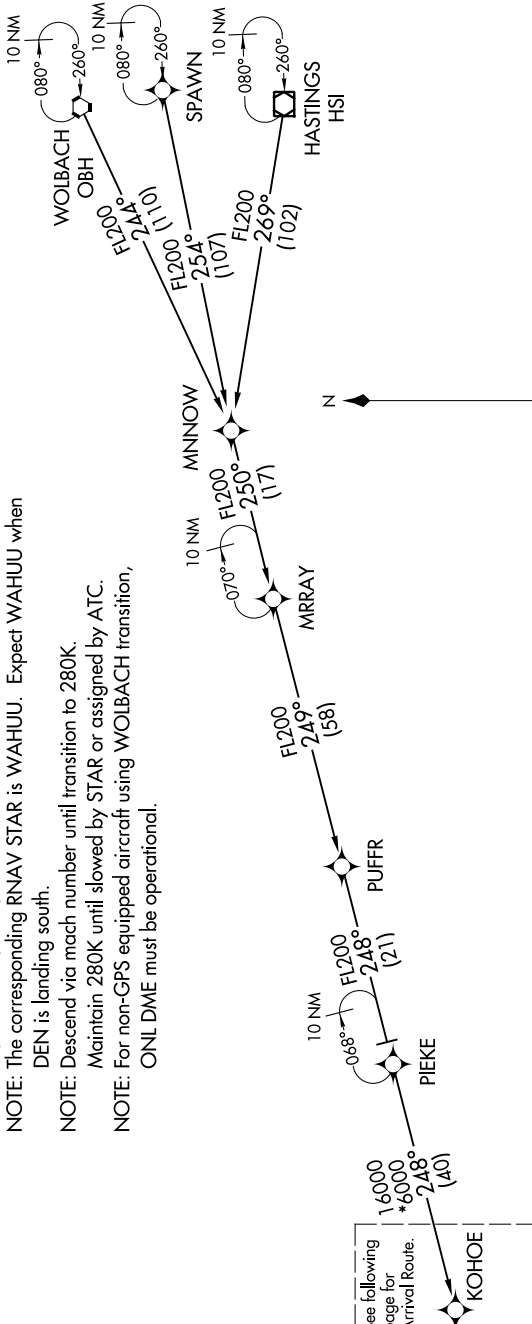


KOHOE THREE ARRIVAL (RNAV) Transition Routes

SW-1, 15 AUG 2019 to 12 SEP 2019

DENVER APP CON
124.95 346.4
D-ATIS ARR
125.6 379.9

- NOTE: RADAR required.
- NOTE: RNAV 1.
- NOTE: DME/DME/IRU or GPS required.
- NOTE: Turbojet aircraft only.
- NOTE: Expect runway assignment on initial contact with Denver TRACON.
- NOTE: The corresponding RNAV STAR is WAHUU. Expect WAHUU when DEN is landing south.
- NOTE: Descend via mach number until transition to 280K. Maintain 280K until slowed by STAR or assigned by ATC.
- NOTE: For non-GPS equipped aircraft using WOLBACH transition, ONL DME must be operational.



See following page for *6000 Arrival Route.

HASTINGS TRANSITION (HSI.KOHOE3)
SPAWN TRANSITION (SPAWN.KOHOE3)
WOLBACH TRANSITION (OBH.KOHOE3)

(CONTINUED ON FOLLOWING PAGE)

NOTE: Chart not to scale.

SW-1, 15 AUG 2019 to 12 SEP 2019