

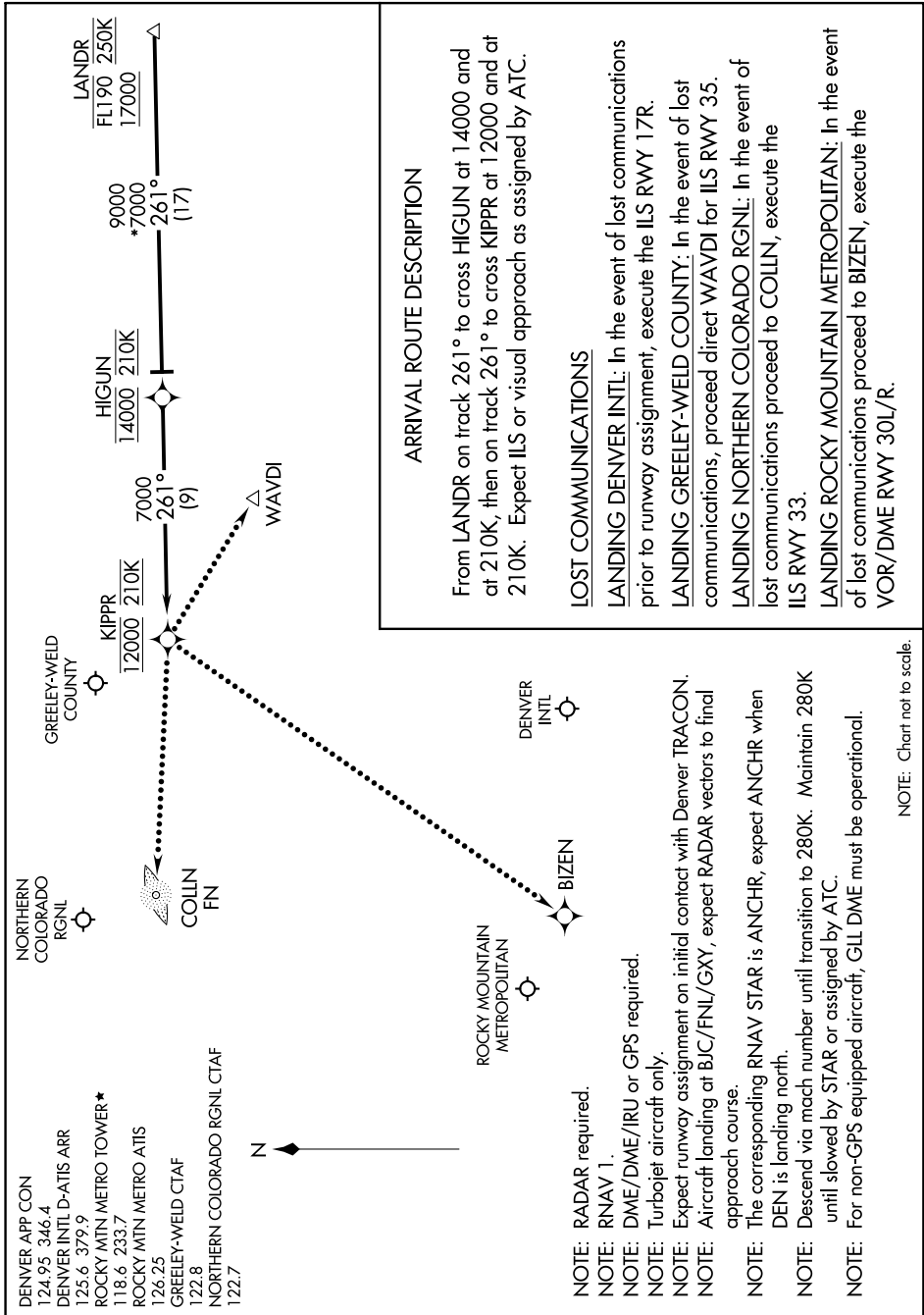
# KIPPR FIVE ARRIVAL (RNAV)

Arrival Route

AL-9077 (FAA)

DENVER, COLORADO

6:10:23 EST '15 AUG 2019 to 12 SEP 2019



## ARRIVAL ROUTE DESCRIPTION

From LANDR on track 261° to cross HIGJUN at 14000 and at 210K, then on track 261° to cross KIPPR at 12000 and at 210K. Expect ILS or visual approach as assigned by ATC.

## LOST COMMUNICATIONS

**LANDING DENVER INTL:** In the event of lost communications prior to runway assignment, execute the ILS RWY 17R.  
**LANDING GREELEY-WELD COUNTY:** In the event of lost communications, proceed direct WAVDI for ILS RWY 35.  
**LANDING NORTHERN COLORADO RGNL:** In the event of lost communications proceed to COLLN, execute the ILS RWY 33.  
**LANDING ROCKY MOUNTAIN METROPOLITAN:** In the event of lost communications proceed to BIZEN, execute the VOR/DME RWY 30L/R.

NOTE: Chart not to scale.

# KIPPR FIVE ARRIVAL (RNAV)

Arrival Route

DENVER, COLORADO

SW-1, 15 AUG 2019 to 12 SEP 2019