

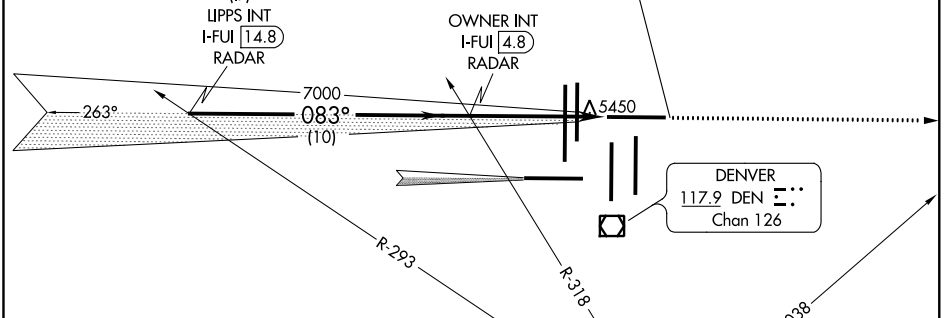
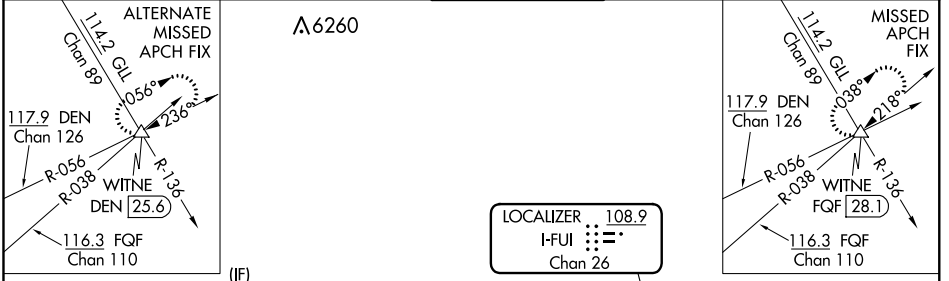
LOC/DME I-FUI 108.9 Chan 26	APP CRS 083°	Rwy Idg TDZE Apt Elev	12000 5354 5434
--	------------------------	-----------------------------	--

ILS or LOC RWY 8

DENVER INTL (DEN)

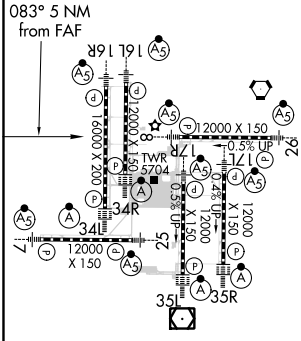
Simultaneous approach authorized with Rwy 7. For inoperative MALSR, increase S-LOC 8 Cat C/D visibility to RVR 5500. ** RVR 1800 authorized with use of FD or AP or HUD to DA.

D-ATIS ARR 125.6 379.9 DEP 134.025	DENVER APP CON 119.3 307.3 (NORTH) 120.35 379.3 (SOUTH)	DENVER TOWER 132.35 239.275	GND CON 121.85 377.1	CLNC DEL 118.75	CPDLC
--	---	---------------------------------------	--------------------------------	---------------------------	-------



RADAR REQUIRED

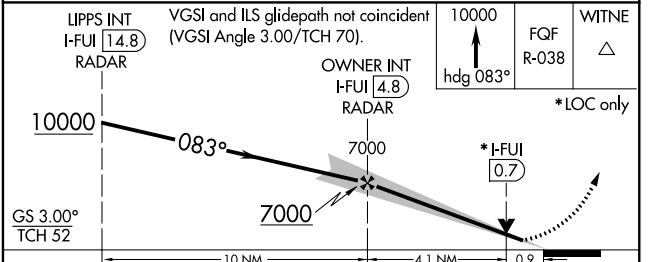
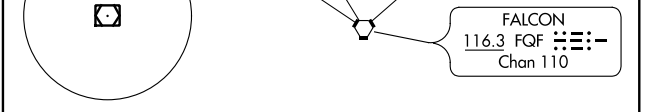
ELEV 5434	D	TDZE 5354
-----------	----------	-----------



TDZ/CL Rwy 7, 16L, 16R, 17R, 26, 34L, 34R, 35L, 35R
HIRL all Rwy

FAF to MAP 5 NM

Knots	60	90	120	150	180
Min:Sec	5:00	3:20	2:30	2:00	1:40



GS 3.00° TCH 52	10000	7000	0.9	
CATEGORY	A	B	C	D
S-ILS 8**	5554/24 200 (200-1/2)			
S-LOC 8	5700/24	346 (300-1/2)	5700/30	346 (300-5/8)

SW-1, 15 AUG 2019 to 12 SEP 2019

SW-1, 15 AUG 2019 to 12 SEP 2019