

LOC/DME I-DZG <b>111.55</b> Chan <b>52(Y)</b>	APP CRS <b>082°</b>	Rwy Idg TDZE Apt Elev	<b>12000</b> <b>5352</b> <b>5434</b>
-----------------------------------------------------	------------------------	-----------------------------	--------------------------------------------

# ILS or LOC RWY 7

DENVER INTL (DEN)

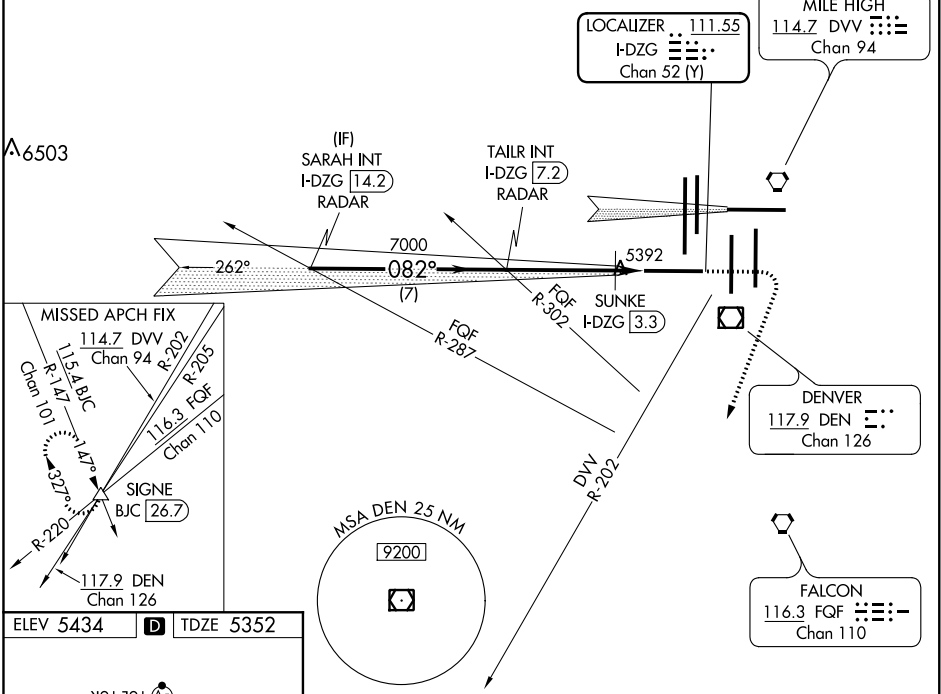
Simultaneous approach authorized with Rwy 8.  
For inoperative ALS, increase SUNKE FIX Cat C/D visibility to RVR 4500.



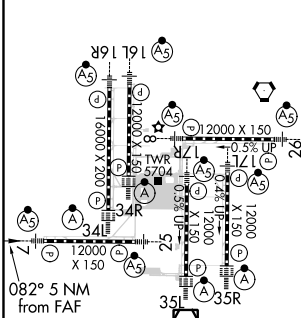
MISSED APPROACH: Climb to 5900, then climbing right turn to 11000 on heading 193° and on DVV VORTAC R-202 to SIGNE INT/BJC 26.7 DME and hold.

D-ATIS ARR <b>125.6 379.9</b> DEP <b>134.025</b>	DENVER APP CON <b>119.3 307.3 120.35 379.3</b> (NORTH) (SOUTH)	DENVER TOWER <b>128.75 273.55</b>	GND CON <b>127.5 379.175</b>	CLNC DEL <b>118.75</b>	CPDLC
--------------------------------------------------------	-------------------------------------------------------------------------	--------------------------------------	---------------------------------	---------------------------	-------

## RADAR REQUIRED



ELEV 5434	D	TDZE 5352
-----------	---	-----------



TDZ/CL Rwy 7, 16L, 16R, 17R, 26, 34L, 34R, 35L, 35R  
HIRL all Rwys

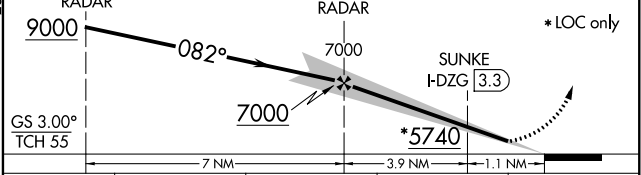
FAF to MAP 5 NM

Knots	60	90	120	150	180
Min:Sec	5:00	3:20	2:30	2:00	1:40

VGSI and ILS glidepath not coincident (VGSI Angle 3.00/TCH 68).

5900	11000	DVV	SIGNE
↑	hdg	R-202	△
	193°		

\* LOC only



CATEGORY	A	B	C	D
S-ILS 7		5552/18	200 (200-½)	
S-LOC 7	5740/24	388 (400-½)	5740/35	388 (400-¾)
SUNKE FIX MINIMUMS				
S-LOC 7	5660/24 308 (300-½)			

SW-1, 15 AUG 2019 to 12 SEP 2019

SW-1, 15 AUG 2019 to 12 SEP 2019