

ILS or LOC RWY 35R

DENVER INTL (DEN)

LOC/DME I-DPP 110.15 Chan 38(Y)	APP CRS 353°	Rwy Idg 12000 TDZE 5370 Apt Elev 5434
---	------------------------	--

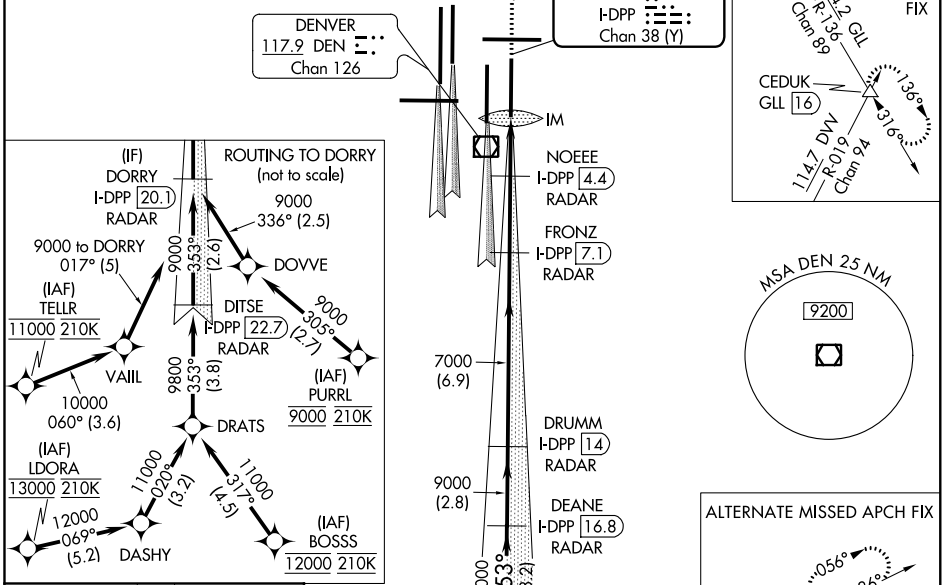
▽ S-LOC 35R DME or RADAR required.
Simultaneous approach authorized with Rwy 34L, Rwy 34R, and Rwy 35L.

ALSF-2
(A)

MISSED APPROACH: Climb to 5800 then climbing right turn to 10000 on heading 048° and on GLL VORTAC R-136 to CEDUK/GLL 16 DME and hold.

D-ATIS ARR 125.6 379.9 DEP 134.025	DENVER APP CON 119.3 307.3 120.35 379.3 (NORTH) (SOUTH)	DENVER TOWER 132.35 239.275	GND CON 121.85 377.1	CLNC DEL 118.75	CPDLC
--	--	---------------------------------------	--------------------------------	---------------------------	-------

RADAR or GPS REQUIRED

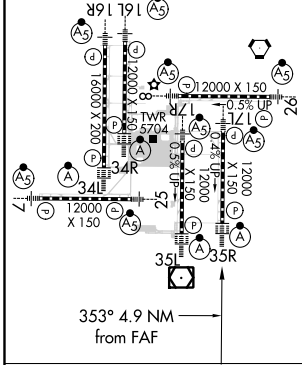


SW-1, 15 AUG 2019 to 12 SEP 2019

SW-1, 15 AUG 2019 to 12 SEP 2019

ELEV 5434	D	TDZE 5370
-----------	----------	-----------

HIRL all Rwys
TDZ/CL Rwys 7, 16L, 16R, 17R, 26, 34L, 34R, 35L, 35R



FAF to MAP 4.9 NM					
Knots	60	90	120	150	180
Min:Sec	4:54	3:16	2:27	1:58	1:38

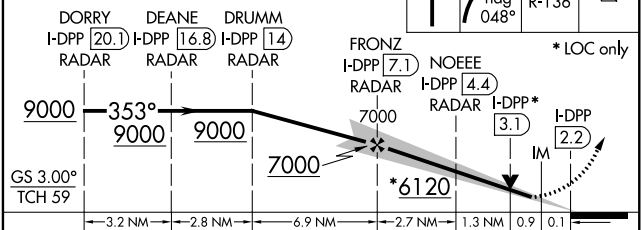
SEE INSET FOR ROUTING TO DORRY

(IF) DORRY I-DPP [20.1] RADAR

6569 **△**

ALTERNATE MISSED APCH FIX
WITNE DEN [25.6]
117.9 DEN R-056 Chan 126

VGSI and ILS glidepath not coincident (VGSI Angle 3.00/TCH 66).



CATEGORY	A	B	C	D
S-ILS 35R	5570/18 200 (200-½)			
S-LOC 35R	5740/24	370 (400-½)	5740/35	370 (400-¾)