

ILS or LOC RWY 34R

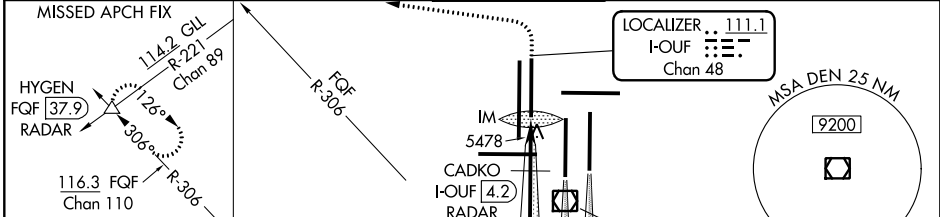
DENVER INTL (DEN)

LOC/DME I-OUF 111.1 Chan 48	APP CRS 353°	Rwy Idg TDZE 5354 Apt Elev 5434	12000
---	------------------------	---	--------------

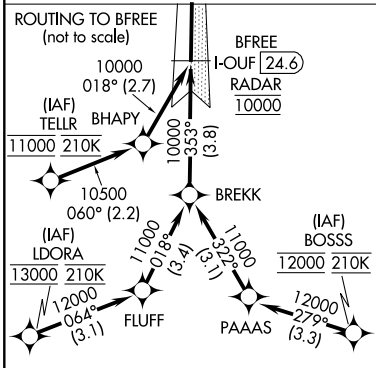
▼ S-LOC 34R DME or RADAR required. Simultaneous approach authorized with Rwy 35L/R. For inoperative ALSF, increase S-LOC Cat C/D visibility to RVR 5500.

ALSF-2
(A) MISSED APPROACH: Climb to 5800 then climbing left turn to 10000 on heading 270° and on FQF VORTAC R-306 to HYGEN/FQF 37.9 DME/RADAR and hold.

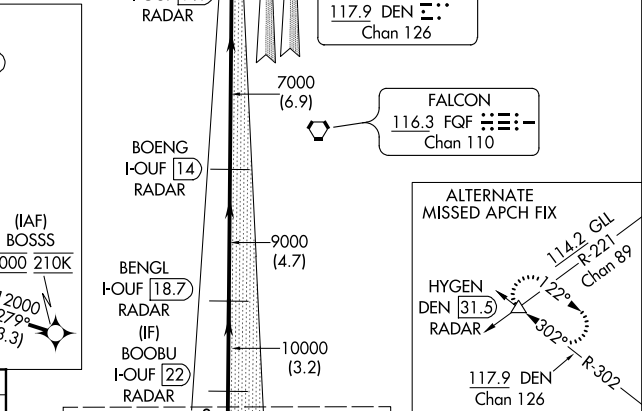
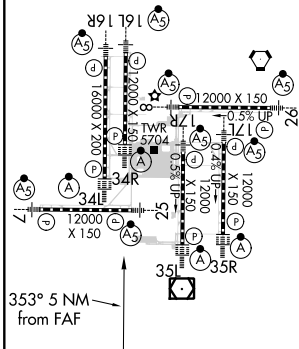
D-ATIS ARR 125.6 379.9 DEP 134.025	DENVER APP CON 119.3 307.3 120.35 379.3 (NORTH) (SOUTH)	DENVER TOWER 135.3 351.95	GND CON 127.5 379.175	CLNC DEL 118.75	CPDLC
--	---	-------------------------------------	---------------------------------	---------------------------	-------



RADAR or GPS REQUIRED



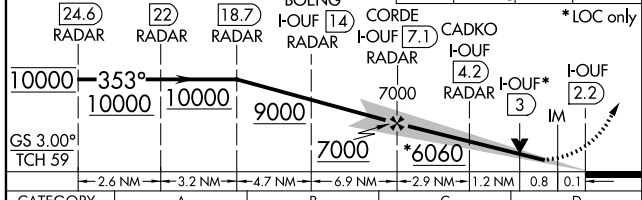
ELEV 5434	D	TDZE 5354
TDZ/CL Rwys 7, 16L, 16R, 17R, 26, 34L, 34R, 35L, 35R		
HIRL all Rwys		



VGSI and ILS glidepath not coincident (VGSI Angle 3.00/TCH 63).

5800	10000	FQF	HYGEN
↑	hdg 270°	R-306	△

*LOC only



FAF to MAP 5 NM					
Knots	60	90	120	150	180
Min:Sec	5:00	3:20	2:30	2:00	1:40
S-ILS 34R	5554/18 200 (200-½)				
S-LOC 34R	5700/24 346 (300-½)		5700/30 346 (300-¾)		

SW-1, 15 AUG 2019 to 12 SEP 2019

SW-1, 15 AUG 2019 to 12 SEP 2019