


LOC/DME I-DQQ <b>111.9</b> Chan <b>56</b>	APP CRS <b>173°</b>	Rwy Idg <b>16000</b> TDZE <b>5326</b> Apt Elev <b>5434</b>
---	------------------------	--

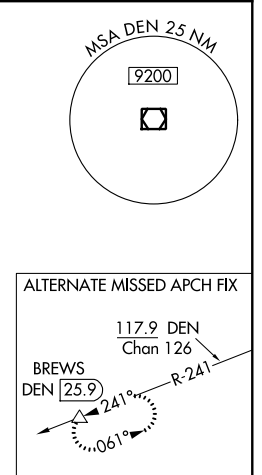
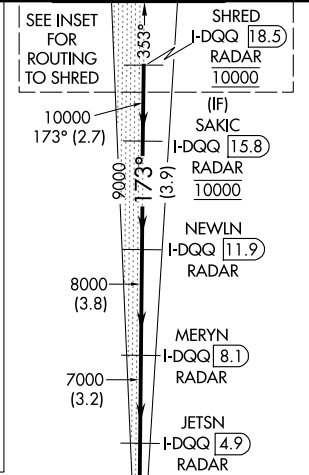
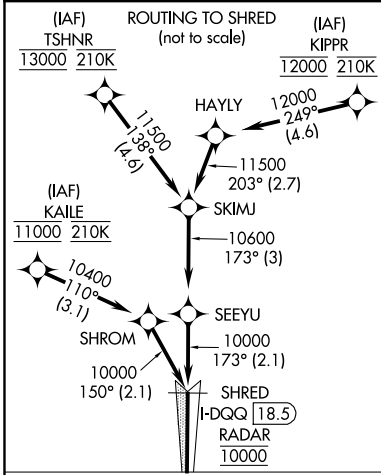
# ILS or LOC RWY 16R

DENVER INTL (DEN)

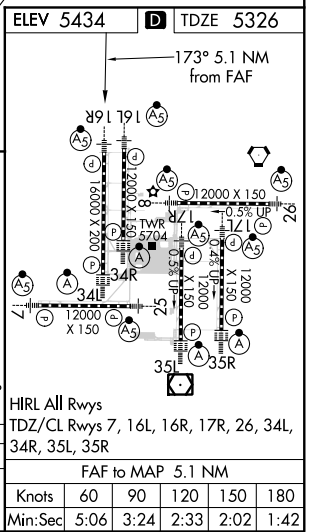
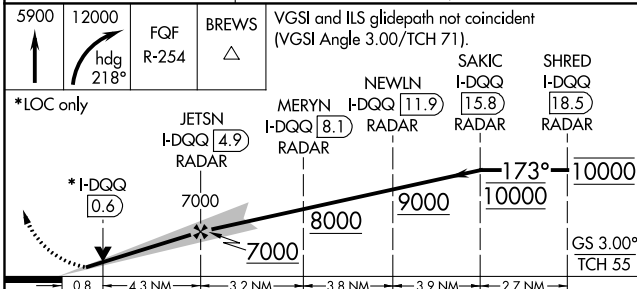
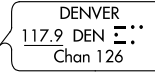
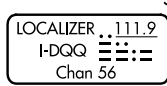
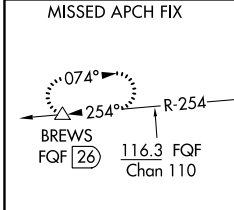
**▼** For inoperative MALSR, increase S-LOC Cat C/D visibility to RVR 4500. Simultaneous approach authorized with Rwy 17L and 17R. DME required.

**MALSR**  MISSED APPROACH: Climb to 5900 then climbing right turn to 12000 on heading 218° and on FGF VORTAC R-254 to BREWS/FQF 26 DME and hold.

D-ATIS ARR <b>125.6 379.9</b> DEF <b>134.025</b>	DENVER APP CON <b>119.3 307.3 120.35 379.3</b> (NORTH) (SOUTH)	DENVER TOWER <b>135.3 351.95</b>	GND CON <b>127.5 379.175</b>	CLNC DEL <b>118.75</b>	CPDLC
--	--	-------------------------------------	---------------------------------	---------------------------	-------



## RADAR or GPS REQUIRED



CATEGORY	A	B	C	D
S-ILS 16R		5526/18 200 (100-½)		
S-LOC 16R		5640/24 314 (300-½)		

SW-1, 15 AUG 2019 to 12 SEP 2019

SW-1, 15 AUG 2019 to 12 SEP 2019