

LOC/DME I-DPP 110.15 Chan 38(Y)	APP CRS 353°	Rwy Idg TDZE Apt Elev	12000 5370 5434
---	------------------------	-----------------------------	--

ILS RWY 35R (SA CAT I)

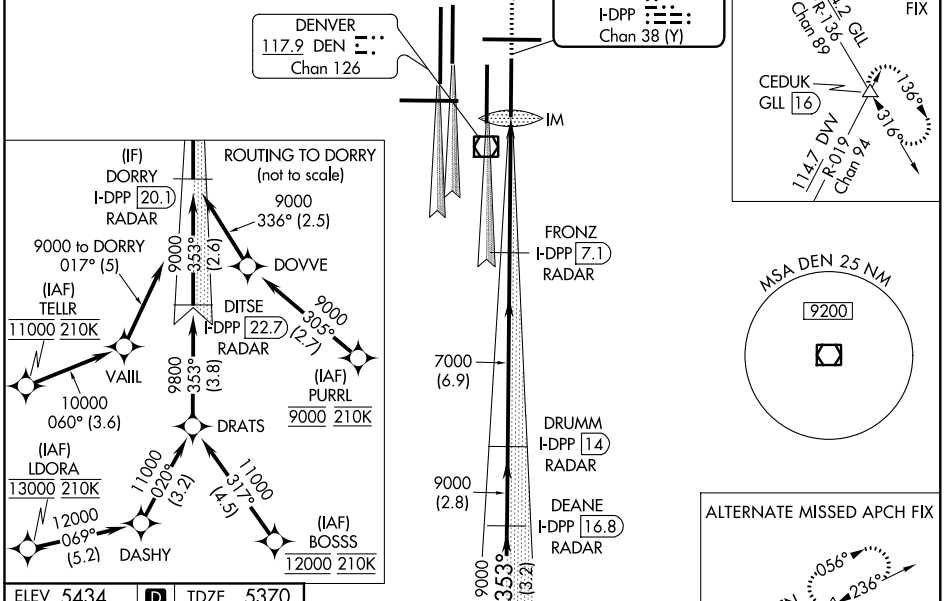
DENVER INTL (DEN)

Requires specific OPSPEC, MSPEC, or LOA approval and use of HUD to DH. Simultaneous approach authorized with Rwy 34L, Rwy 34R, and Rwy 35L.

ALSF-2
MISSED APPROACH: Climb to 5800 then climbing right turn to 10000 on heading 048° and on GLL VORTAC R-136 to CEDUK/GLL 16 DME and hold.

D-ATIS ARR 125.6 379.9 DEP 134.025	DENVER APP CON 119.3 307.3 120.35 379.3 (NORTH) (SOUTH)	DENVER TOWER 132.35 239.275	GND CON 121.85 377.1	CLNC DEL 118.75	CPDLC
--	--	---------------------------------------	--------------------------------	---------------------------	-------

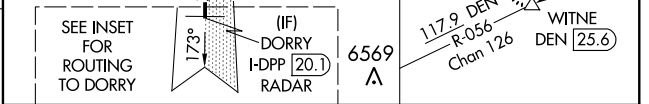
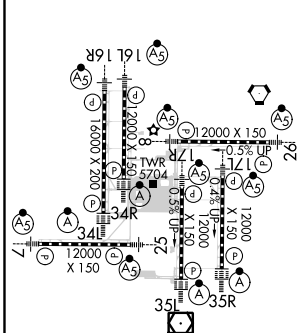
RADAR or GPS REQUIRED



SW-1, 15 AUG 2019 to 12 SEP 2019

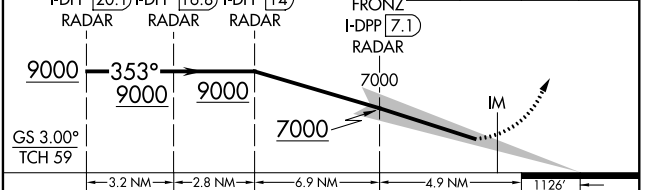
SW-1, 15 AUG 2019 to 12 SEP 2019

ELEV 5434 **D** TDZE 5370



VGSI and ILS glidepath not coincident (VGSI Angle 3.00/TCH 66).

DORRY I-DPP [20.1] RADAR	DEANE I-DPP [16.8] RADAR	DRUMM I-DPP [14] RADAR	FRONZ I-DPP [7.1] RADAR
--------------------------	--------------------------	------------------------	-------------------------



CATEGORY	A	B	C	D
S-ILS 35R	RA 161/14 150 DA 5520			

SA CATEGORY I ILS - SPECIAL AIRCREW & AIRCRAFT CERTIFICATION REQUIRED