

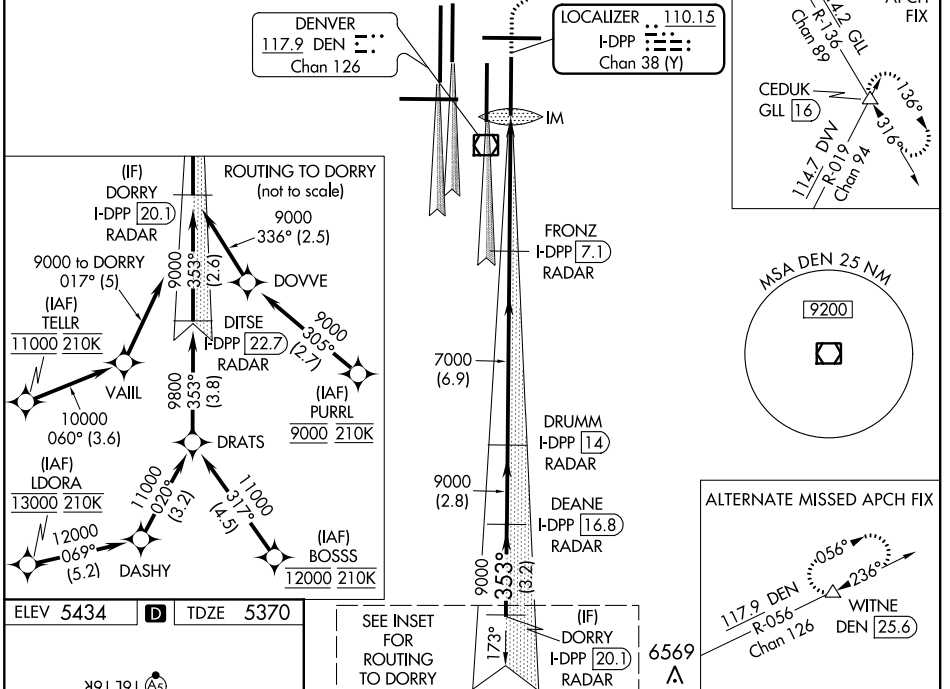
LOC/DME I-DPP <b>110.15</b> Chan <b>38(Y)</b>	APP CRS <b>353°</b>	Rwy Idg <b>12000</b> TDZE <b>5370</b> Apt Elev <b>5434</b>
---	------------------------	--

# ILS RWY 35R (CAT II & III)

DENVER INTL (DEN)

Simultaneous approach authorized with Rwy 34L, Rwy 34R, and Rwy 35L. CAT II: RVR 1000 authorized with specific OPSPEC, MSPEC, or LOA approval and use of autoland or HUD to touchdown.	ALSf-2	MISSED APPROACH: Climb to 5800 then climbing right turn to 10000 on heading 048° and on GLL VORTAC R-136 to CEDUK/GLL 16 DME and hold.			
	D-ATIS ARR <b>125.6 379.9</b> DEP <b>134.025</b>	DENVER APP CON <b>119.3 307.3 120.35 379.3</b> (NORTH) (SOUTH)	DENVER TOWER <b>132.35 239.275</b>	GND CON <b>121.85 377.1</b>	CLNC DEL <b>118.75</b>

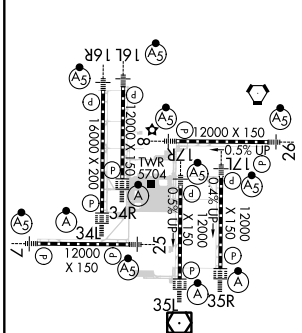
## RADAR or GPS REQUIRED



SW-1, 15 AUG 2019 to 12 SEP 2019

SW-1, 15 AUG 2019 to 12 SEP 2019

ELEV 5434	<b>D</b>	TDZE 5370
-----------	----------	-----------



HIRL all Rwys  
TDZ/CL Rwys 7, 16L, 16R, 17R, 26, 34L, 34R, 35L, 35R

VGSi and ILS glidepath not coincident (VGSi Angle 3.00/TCH 66).				5800	10000	GLL	CEDUK
DORRY I-DPP [20.1] RADAR	DEANE I-DPP [16.8] RADAR	DRUMM I-DPP [14] RADAR	FRONZ I-DPP [7.1] RADAR	↑	hdg 048°	R-136	△
9000	9000	9000	7000				
GS 3.00°	TCH 59						
-3.2 NM		-2.8 NM		-6.9 NM		-4.9 NM	
						1128'	

CATEGORY	A	B	C	D
S-ILS 35R	CAT II RA 111/12 100 DA 5470			
S-ILS 35R	CAT IIIa RVR 07			
S-ILS 35R	CAT IIIb RVR 03			
S-ILS 35R	CAT IIIc NA			

## CATEGORY II & III ILS - SPECIAL AIRCREW & AIRCRAFT CERTIFICATION REQUIRED