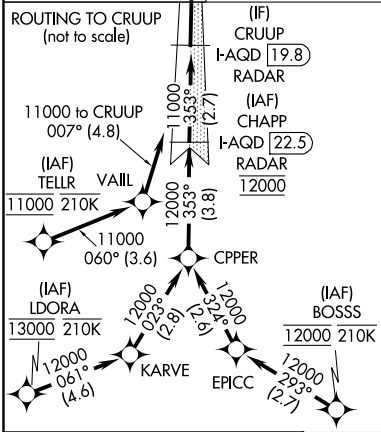
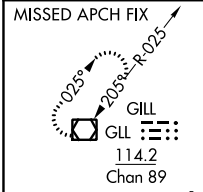


LOC/DME I-AQD <b>108.5</b> Chan <b>22</b>	APP CRS <b>353°</b>	Rwy Idg <b>12000</b> TDZE <b>5434</b> Apt Elev <b>5434</b>
---	------------------------	--

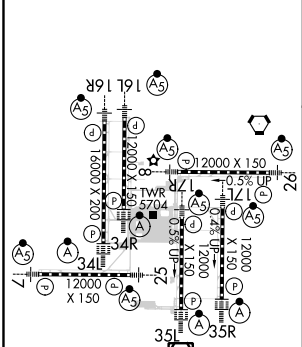
# ILS RWY 35L (SA CAT I)

DENVER INTL (DEN)

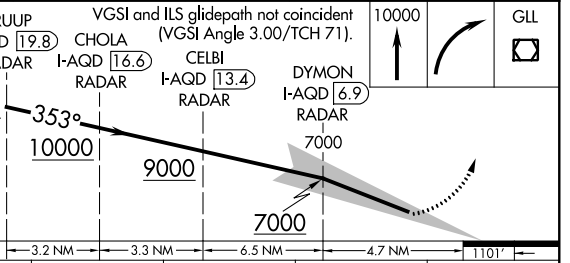
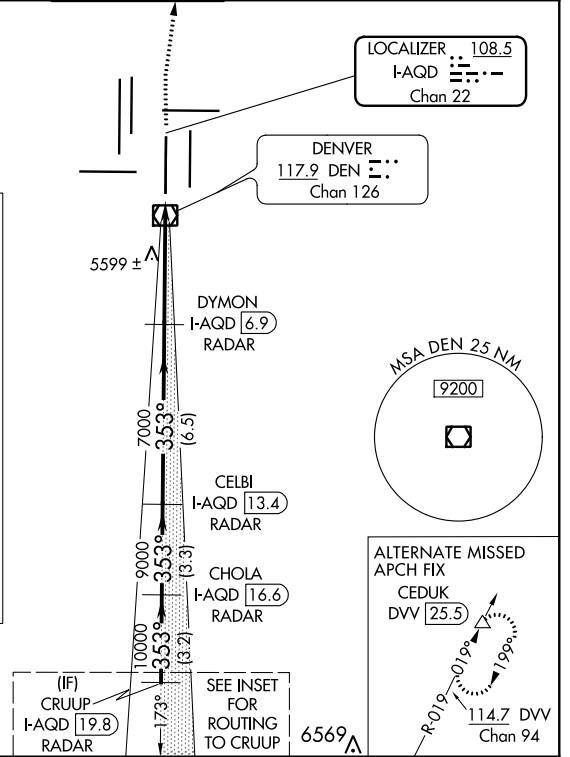
RNAV 1-GPS or RADAR required for procedure entry.		ALS-F2	MISSED APPROACH: Climb to 10000 then right turn direct GLL VOR/DME and hold.		
<b>▽</b> Simultaneous approach authorized. Requires specific OPSPEC, MSPEC, or LOA approval and use of HUD to DH.					
D-ATIS ARR <b>125.6 379.9</b> DEP <b>134.025</b>	DENVER APP CON <b>119.3 307.3</b> (NORTH) <b>120.35 379.3</b> (SOUTH)	DENVER TOWER <b>133.3 322.45</b>	GND CON <b>121.85 377.1</b>	CLNC DEL <b>118.75</b>	CPDLC



ELEV 5434 **D** TDZE 5434



HIRL all Rwys  
TDZ/CL Rwys 7, 16L, 16R, 17R, 26, 34L, 34R, 35L, 35R



CATEGORY	A	B	C	D
S-ILS 35L	RA 165/14 150 DA 5584			

**SA CATEGORY I ILS - SPECIAL AIRCREW & AIRCRAFT CERTIFICATION REQUIRED**

SW-1, 15 AUG 2019 to 12 SEP 2019

SW-1, 15 AUG 2019 to 12 SEP 2019