

LOC/DME I-OUF 111.1 Chan 48	APP CRS 353°	Rwy Idg TDZE Apt Elev 12000 5354 5434
---	------------------------	---

ILS RWY 34R (CAT II & III)

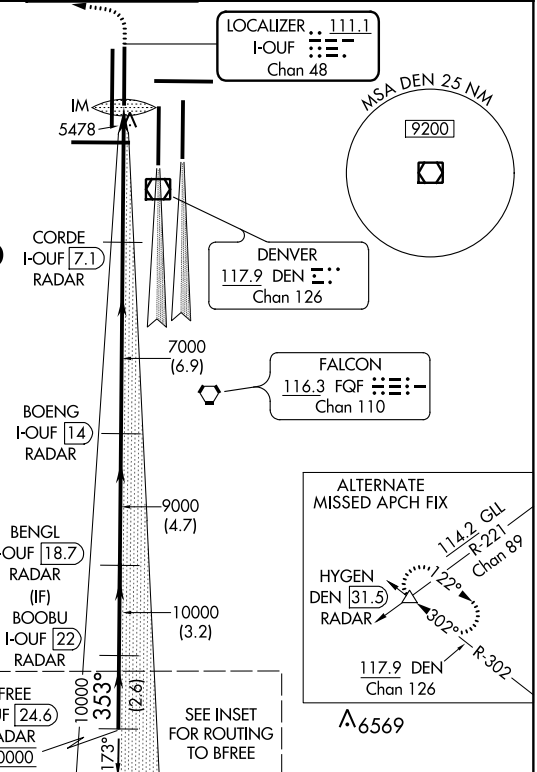
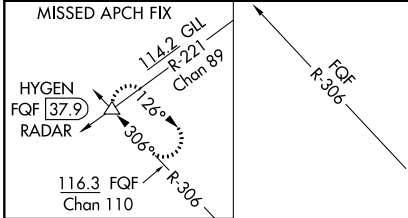
DENVER INTL (DEN)

Simultaneous approach authorized with Rwy 35L/R.
CAT II: RVR 1000 authorized with specific OPSEC, MSPEC or LOA approval and use of autoland or HUD to touchdown.

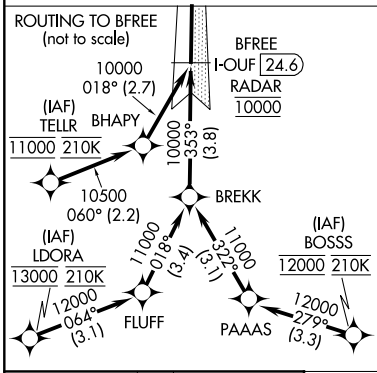


MISSED APPROACH: Climb to 5800 then climbing left turn to 10000 on heading 270° and on FQF VORTAC R-306 to HYGEN/FQF 37.9 DME/RADAR and hold.

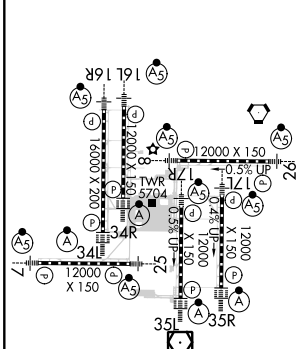
D-ATIS ARR 125.6 379.9 DEP 134.025	DENVER APP CON 119.3 307.3 (NORTH)	DENVER APP CON 120.35 379.3 (SOUTH)	DENVER TOWER 135.3 351.95	GND CON 127.5 379.175	CLNC DEL 118.75	CPDLC
--	---	--	-------------------------------------	---------------------------------	---------------------------	-------



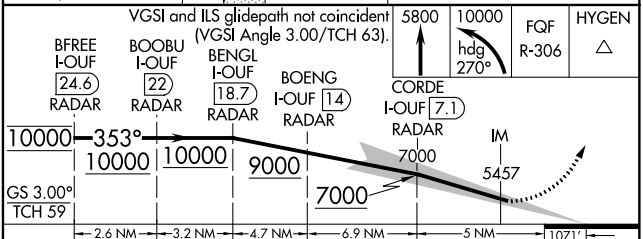
RADAR or GPS REQUIRED



ELEV 5434	D	TDZE 5354
-----------	----------	-----------



HIRL all Rwy
TDZ/CL Rwy 7, 16L, 16R, 17R, 26, 34L, 34R, 35L, 35R



GS 3.00° TCH 59	10000	353°	10000	9000	7000	5457
	-2.6 NM		-3.2 NM	-4.7 NM	-6.9 NM	-5 NM
CATEGORY	A	B	C	D		
S-ILS 34R	CAT II RA 155/12 100 DA 5454					
S-ILS 34R	CAT IIIa RVR 07					
S-ILS 34R	CAT IIIb RVR 03					
S-ILS 34R	CAT IIIc NA					

CATEGORY II & III ILS - SPECIAL AIRCREW & AIRCRAFT CERTIFICATION REQUIRED

SW-1, 15 AUG 2019 to 12 SEP 2019

SW-1, 15 AUG 2019 to 12 SEP 2019