

LOC/DME I-DXU 111.9 Chan 56	APP CRS 353°	Rwy Idg TDZE Apt Elev 16000 5327 5434
---	------------------------	---

ILS RWY 34L (CAT II & III)

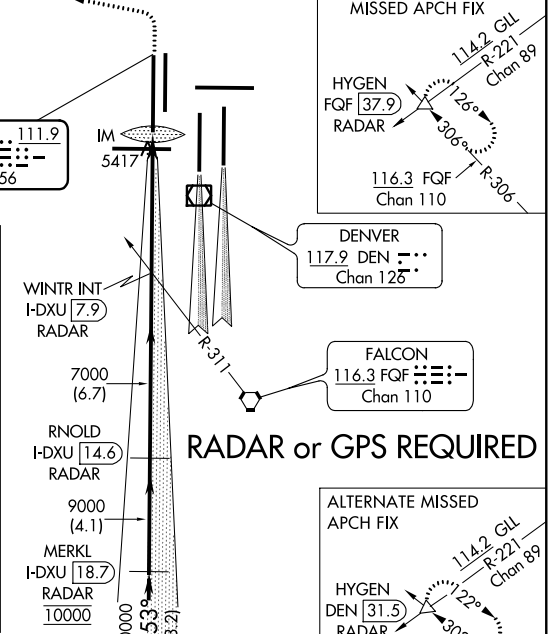
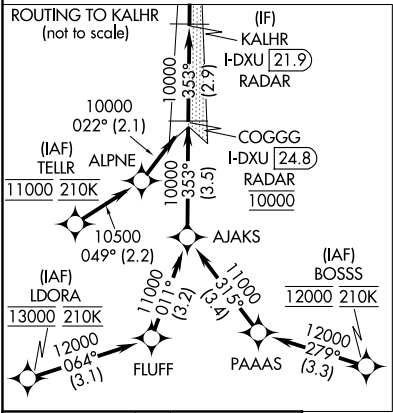
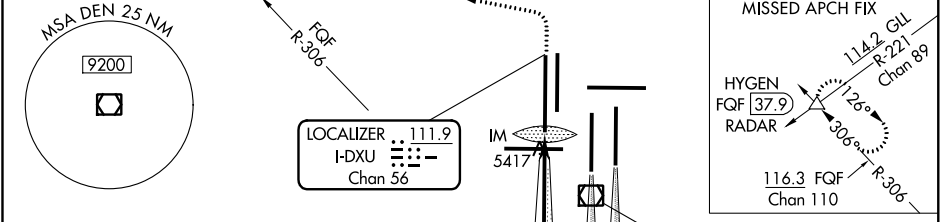
DENVER INTL (DEN)

▼ RADAR or DME required. Simultaneous approach authorized with Rwy 35L/R. CAT II: RVR 1000 authorized with specific OPSPEC, MSPEC, or LOA approval and use of autoland or HUD to touchdown.

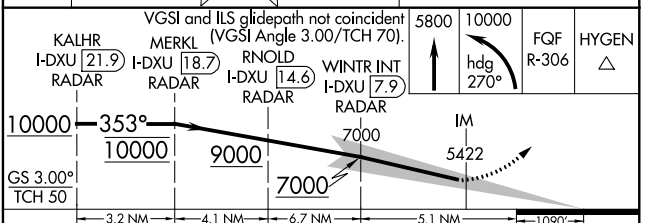
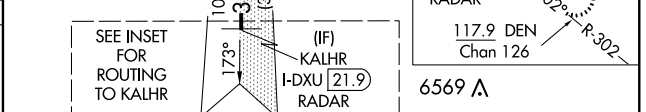
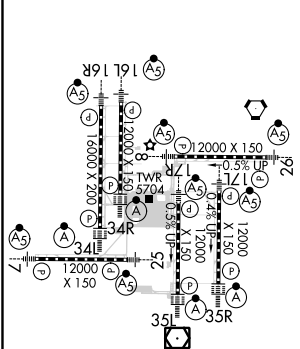
ALSF-2

MISSED APPROACH: Climb to 5800 then climbing left turn to 10000 on heading 270° and on FGF VORTAC R-306 to HYGEN/FGF 37.9 DME/RADAR and hold.

D-ATIS ARR 125.6 379.9 DEP 134.025	DENVER APP CON 119.3 307.3 (NORTH) 120.35 379.3 (SOUTH)	DENVER TOWER 135.3 351.95	GND CON 127.5 379.175	CLNC DEL 118.75	CPDLC
--	---	-------------------------------------	---------------------------------	---------------------------	-------



ELEV 5434	D	TDZE 5327
-----------	----------	-----------



CATEGORY	A	B	C	D
S-ILS 34L	CAT II RA 108/12 100 DA 5427			
S-ILS 34L	CAT IIIa RVR 07			
S-ILS 34L	CAT IIIb RVR 03			
S-ILS 34L	CAT IIIc NA			

CATEGORY II & III ILS - SPECIAL AIRCREW & AIRCRAFT CERTIFICATION REQUIRED

SW-1, 15 AUG 2019 to 12 SEP 2019

SW-1, 15 AUG 2019 to 12 SEP 2019