

FOOOT FOUR DEPARTURE (RNAV)

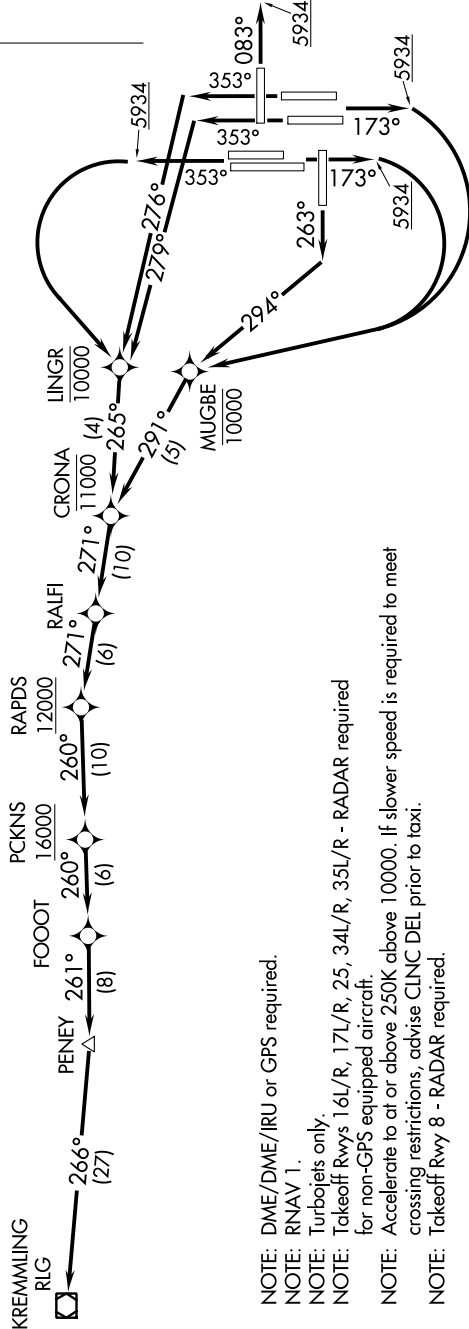
AL-9077 (FAA)

DENVER INTL (DEN)
DENVER, COLORADO

D-ATIS DEP
134.025
CLNC DEL
118.75
CPDLC
DENVER DEP CON
126.1 360.75

**TOP ALTITUDE:
FL230**

TAKEOFF MINIMUMS
Rwys 7, 26: NA-ATC.
Rwy 8: Standard with minimum climb of 400' per NM to 5934.
Rwys 16L/R: Standard with minimum climb of 400' per NM to 5934, then minimum climb of 265' per NM to 16000.
Rwys 17L/R: Standard with minimum climb of 400' per NM to 5934, then minimum climb of 245' per NM to 16000.
Rwy 25: Standard with minimum climb of 425' per NM to 5934, then minimum climb of 265' per NM to 16000.
Rwys 34L/R: Standard with minimum climb of 400' per NM to 5934, then minimum climb of 260' per NM to 16000.
Rwys 35L/R: Standard with minimum climb of 400' per NM to 5934, then minimum climb of 250' per NM to 16000.



- NOTE: DME/DME/IRU or GPS required.
- NOTE: RNAV 1.
- NOTE: Turbojets only.
- NOTE: Takeoff Rwys 16L/R, 17L/R, 25, 34L/R, 35L/R - RADAR required for non-GPS equipped aircraft.
- NOTE: Accelerate to at or above 250K above 10000. If slower speed is required to meet crossing restrictions, advise CLNC DEL prior to taxi.
- NOTE: Takeoff Rwy 8 - RADAR required.

NOTE: Chart not to scale.

(NARRATIVE ON FOLLOWING PAGE)

SW-1, 15 AUG 2019 to 12 SEP 2019

FOOOT FOUR DEPARTURE (RNAV)