

# EMMYS SIX DEPARTURE (RNAV)

AL-9077 (FAA)

DENVER INTL (DEN)

DENVER, COLORADO

610Z FEB 21 15 15 2019 19 11-MS

NOTE: DME/DME/IRU or GPS required.

NOTE: RNAV 1.

NOTE: Turboprops only.

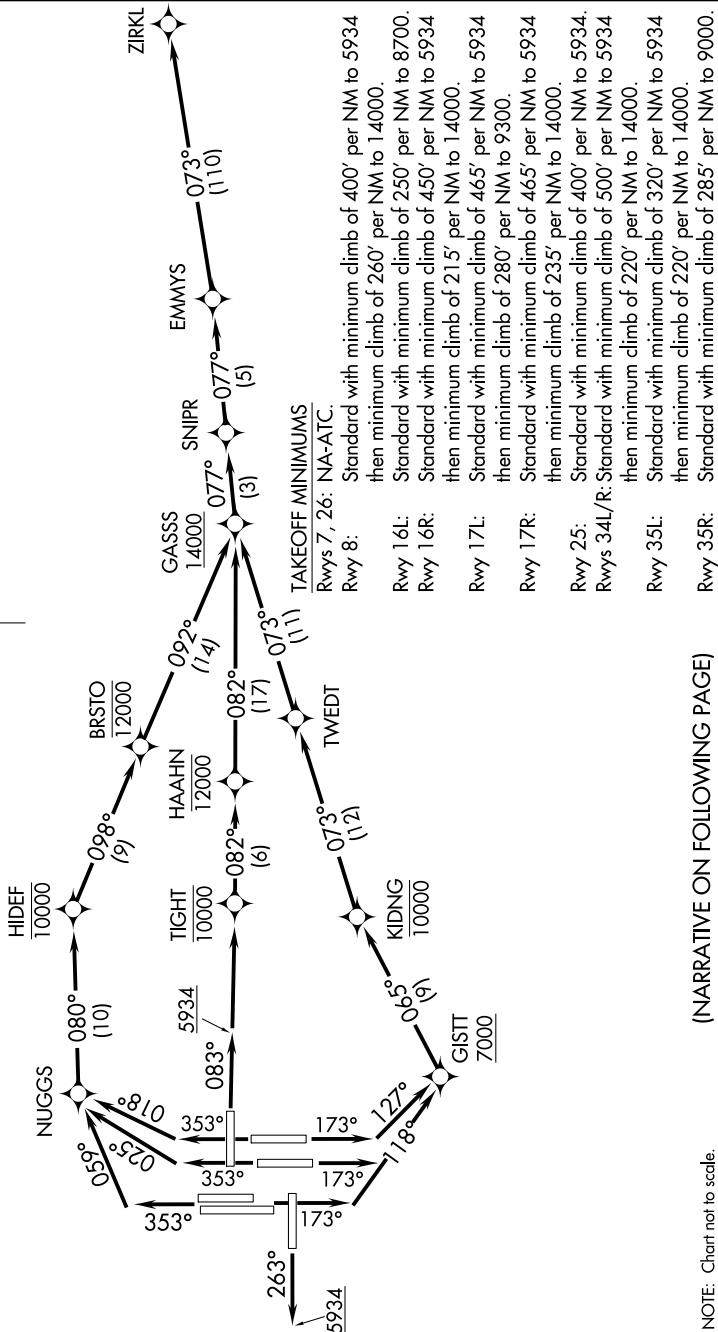
NOTE: Takeoff Rwy 16L/R, 17L/R, 34L/R, 35L/R - RADAR required

NOTE: Accelerate to or above 250K above 10000. If slower speed is required to meet crossing restrictions advise CLNC DEL prior to taxi.

NOTE: Rwy 25 Departures - RADAR required.

**TOP ALTITUDE:  
FL230**

D-ATIS DEP  
134.025  
CLNC DEL  
118.75  
CPDLC  
DENVER DEP CON  
128.25 371.95



# EMMYS SIX DEPARTURE (RNAV)

(EMMYS6.ZIRKL) 13SEP18

DENVER, COLORADO

DENVER INTL (DEN)

NOTE: Chart not to scale.

(NARRATIVE ON FOLLOWING PAGE)

SW-1, 15 AUG 2019 to 12 SEP 2019