

EEONS SIX DEPARTURE (RNAV)

AL-9077 (FAA)

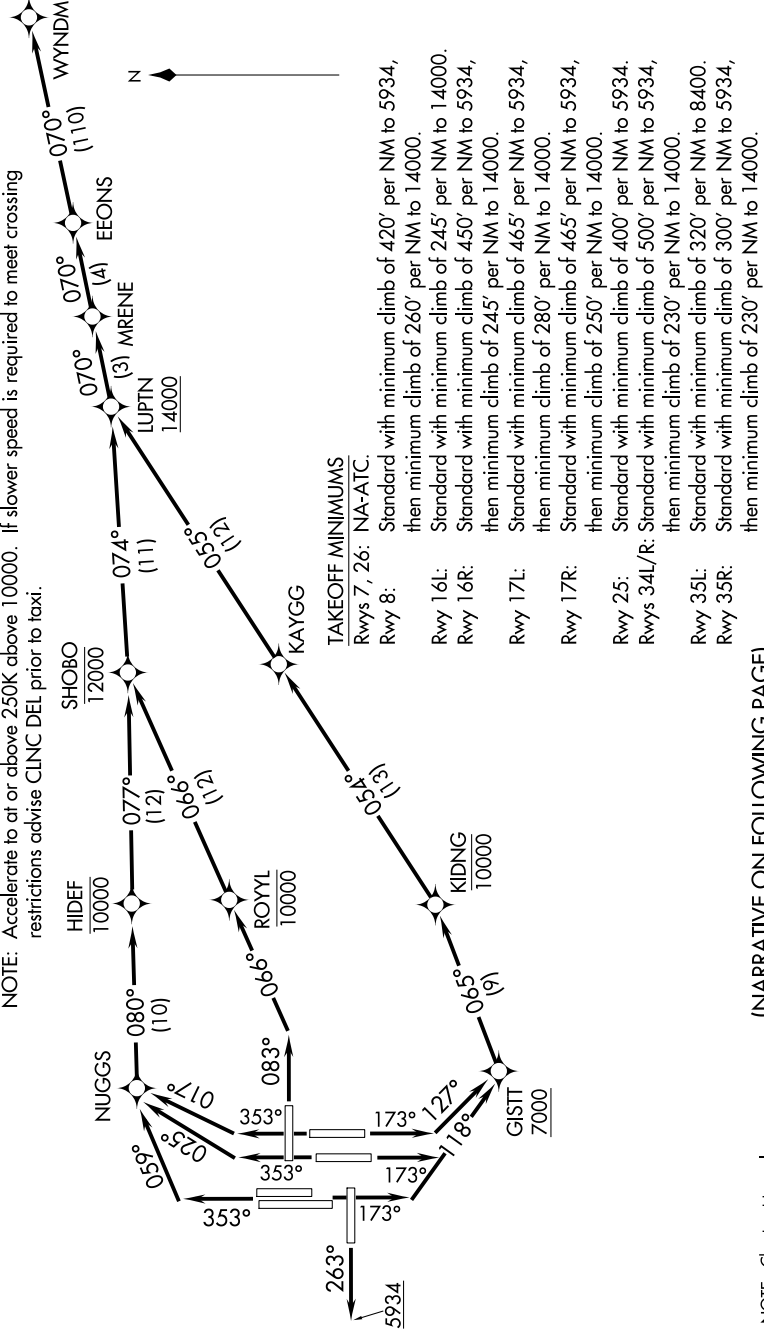
DENVER INTL (DEN)
DENVER, COLORADO

6102 DEE Z1 to 6102 UNV 2015 15 11-MS

D-ATIS DEP
134.025
CLNC DEL
118.75
CPDLC
DENVER DEP CON
128.25 371.95

- NOTE: DME/DME/IRU or GPS required.
- NOTE: RNAV 1.
- NOTE: Turbojets only.
- NOTE: Takeoff Rwy 8, 16L/R, 17L/R, 34L/R, 35L/35R - RADAR required for non-GPS equipped aircraft.
- NOTE: Rwy 25 Departures - RADAR required.
- NOTE: Accelerate to at or above 250K above 10000. If slower speed is required to meet crossing restrictions advise CLNC DEL prior to taxi.

**TOP ALTITUDE:
FL230**



NOTE: Chart not to scale.

(NARRATIVE ON FOLLOWING PAGE)

SW-1, 15 AUG 2019 to 12 SEP 2019

EEONS SIX DEPARTURE (RNAV)