

(CREDE.CREDE3) 17173

# CREDE THREE ARRIVAL (RNAV) Arrival Route

AL-9077 (FAA)

DENVER INTL (DEN)  
DENVER, COLORADO

DENVER APP CON  
120.35 379.3  
D-ATIS ARR  
125.6 379.9

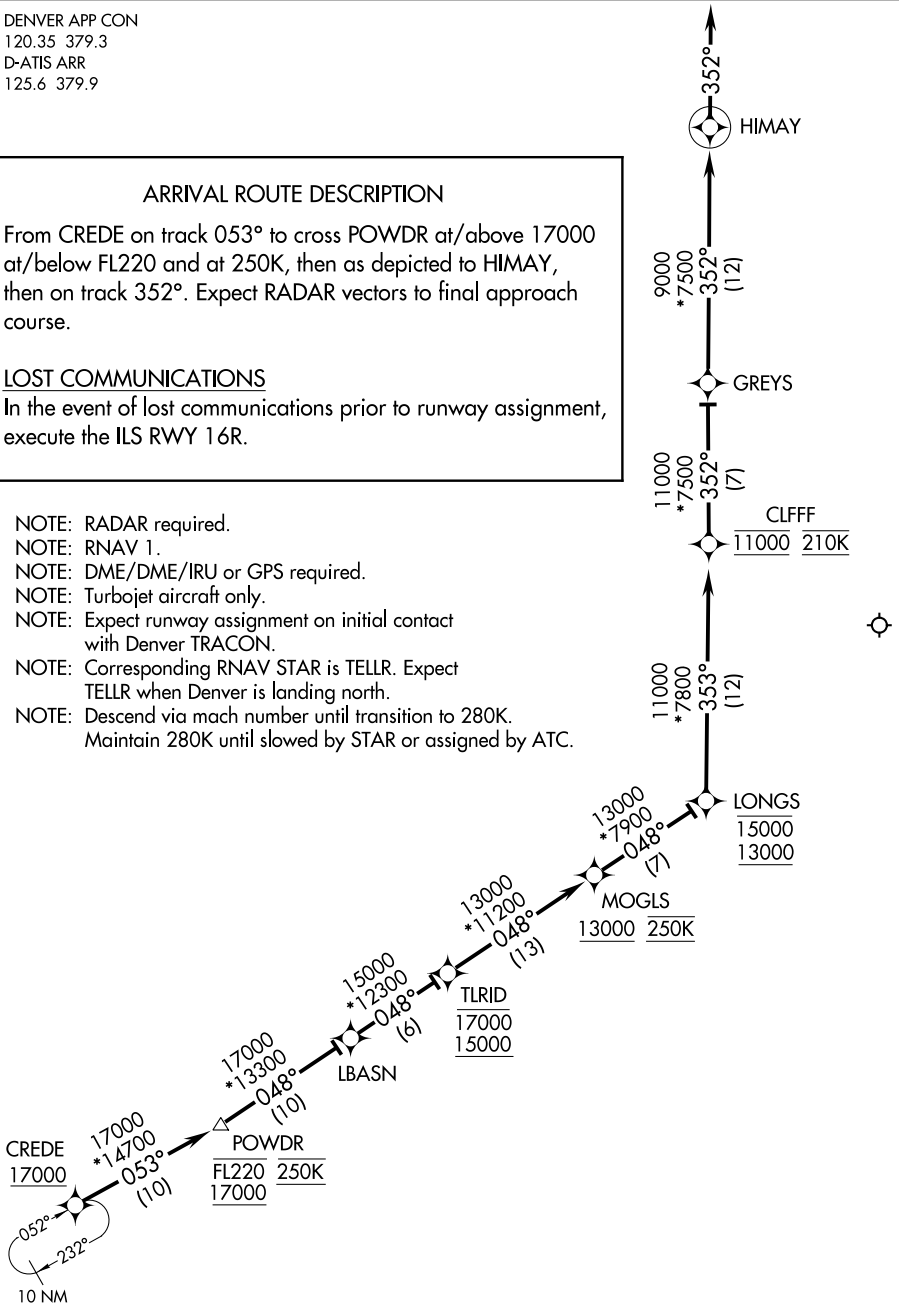
## ARRIVAL ROUTE DESCRIPTION

From CREDE on track 053° to cross POWDR at/above 17000 at/below FL220 and at 250K, then as depicted to HIMAY, then on track 352°. Expect RADAR vectors to final approach course.

## LOST COMMUNICATIONS

In the event of lost communications prior to runway assignment, execute the ILS RWY 16R.

- NOTE: RADAR required.
- NOTE: RNAV 1.
- NOTE: DME/DME/IRU or GPS required.
- NOTE: Turbojet aircraft only.
- NOTE: Expect runway assignment on initial contact with Denver TRACON.
- NOTE: Corresponding RNAV STAR is TELLR. Expect TELLR when Denver is landing north.
- NOTE: Descend via mach number until transition to 280K. Maintain 280K until slowed by STAR or assigned by ATC.



SW-1, 15 AUG 2019 to 12 SEP 2019

SW-1, 15 AUG 2019 to 12 SEP 2019

NOTE: Chart not to scale.

# CREDE THREE ARRIVAL (RNAV) Arrival Route

(CREDE.CREDE3) 18SEP14

DENVER, COLORADO  
DENVER INTL (DEN)