

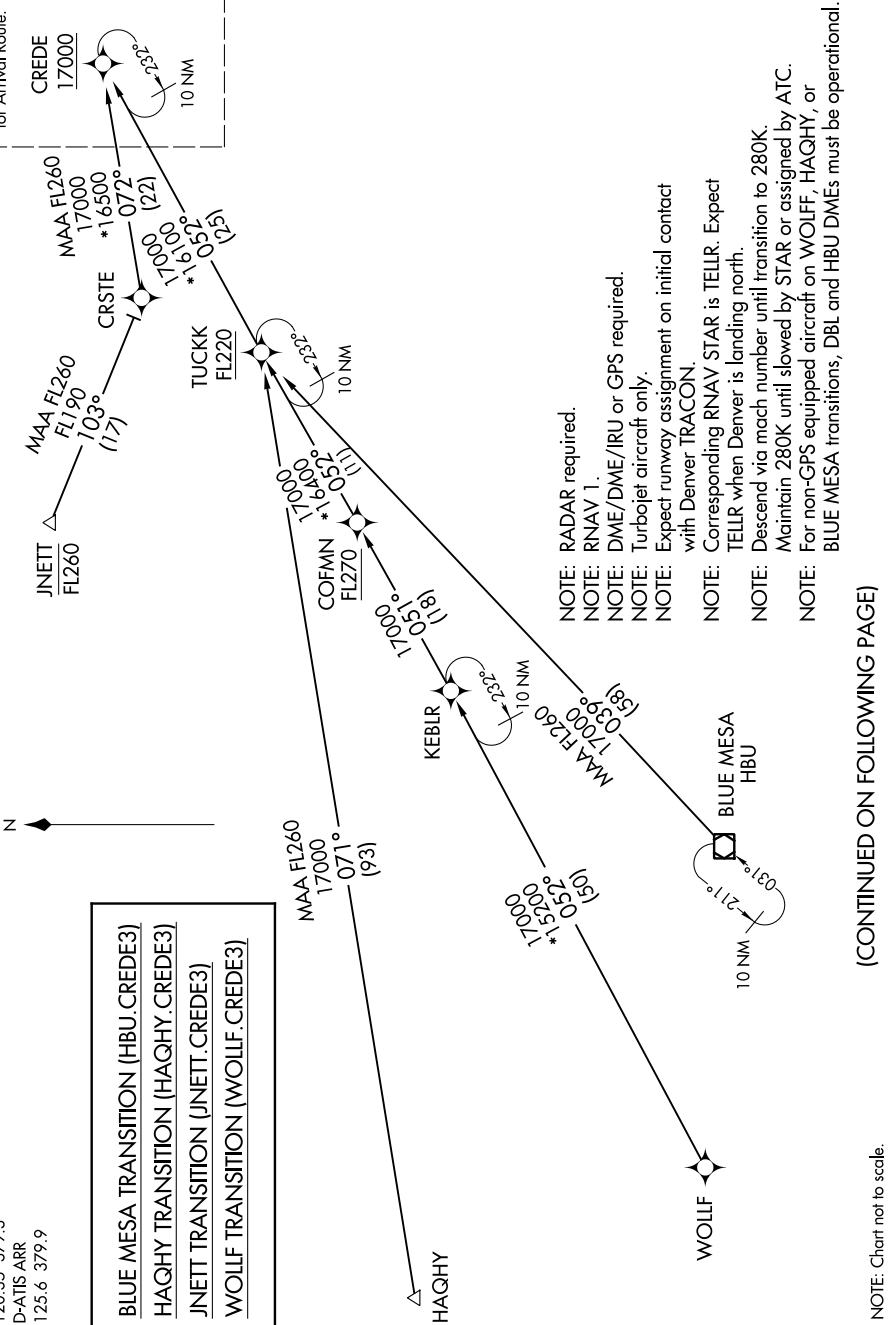
SW-1, 15 AUG 2019 to 12 SEP 2019

DENVER APP CON  
120.35 379.3  
D-ATIS ARR  
125.6 379.9

- BLUE MESA TRANSITION (HBU.CREDE3)
- HAGHY TRANSITION (HAGHY.CREDE3)
- JNETT TRANSITION (JNETT.CREDE3)
- WOLFF TRANSITION (WOLFF.CREDE3)

See following page  
for Arrival Route.

CREDE  
17000



- NOTE: RADAR required.
- NOTE: RNAV 1.
- NOTE: DME/DME/IRU or GPS required.
- NOTE: Turboprop aircraft only.
- NOTE: Expect runway assignment on initial contact with Denver TRACON.
- NOTE: Corresponding RNAV STAR is TELLR. Expect TELLR when Denver is landing north.
- NOTE: Descend via mach number until transition to 280K. Maintain 280K until slowed by STAR or assigned by ATC.
- NOTE: For non-GPS equipped aircraft on WOLFF, HAGHY, or BLUE MESA transitions, DBL and HBU DMEs must be operational.

(CONTINUED ON FOLLOWING PAGE)

NOTE: Chart not to scale.

SW-1, 15 AUG 2019 to 12 SEP 2019