

(BRYCC4.TAYOT) 18256

BRYCC FOUR DEPARTURE (RNAV)

AL-9077 (FAA)

DENVER INTL (DEN)  
DENVER, COLORADO

TAKEOFF MINIMUMS

Rwys 7, 26: NA-ATC.

- Rwy 8: Standard with minimum climb of 405' per NM to 8000, then 285' per NM to 16000.
- Rwys 16L/R: Standard with minimum climb of 400' per NM to 7000, then 260' per NM to 15000.
- Rwy 17L: Standard with minimum climb of 455' per NM to 6500, then 220' per NM to 16000.
- Rwy 17R: Standard with minimum climb of 460' per NM to 6500, then 220' per NM to 15000.
- Rwy 25: Standard with minimum climb of 425' per NM to 8000, then 270' per NM to 16000.
- Rwys 34L/R: Standard with minimum climb of 440' per NM to 8000, then 280' per NM to 13000.
- Rwy 35L: Standard with minimum climb of 400' per NM to 7000, then 270' per NM to 13000.
- Rwy 35R: Standard with minimum climb of 400' per NM to 7000, then 275' per NM to 13000.

TOP ALTITUDE:  
FL230

TAYOT  
D-ATIS DEP 134.025  
CLNC DEL 118.75  
CPDIC 118.75  
GND CON 121.85 377.1  
127.5 379.175  
DENVER DEP CON 127.05 363.25

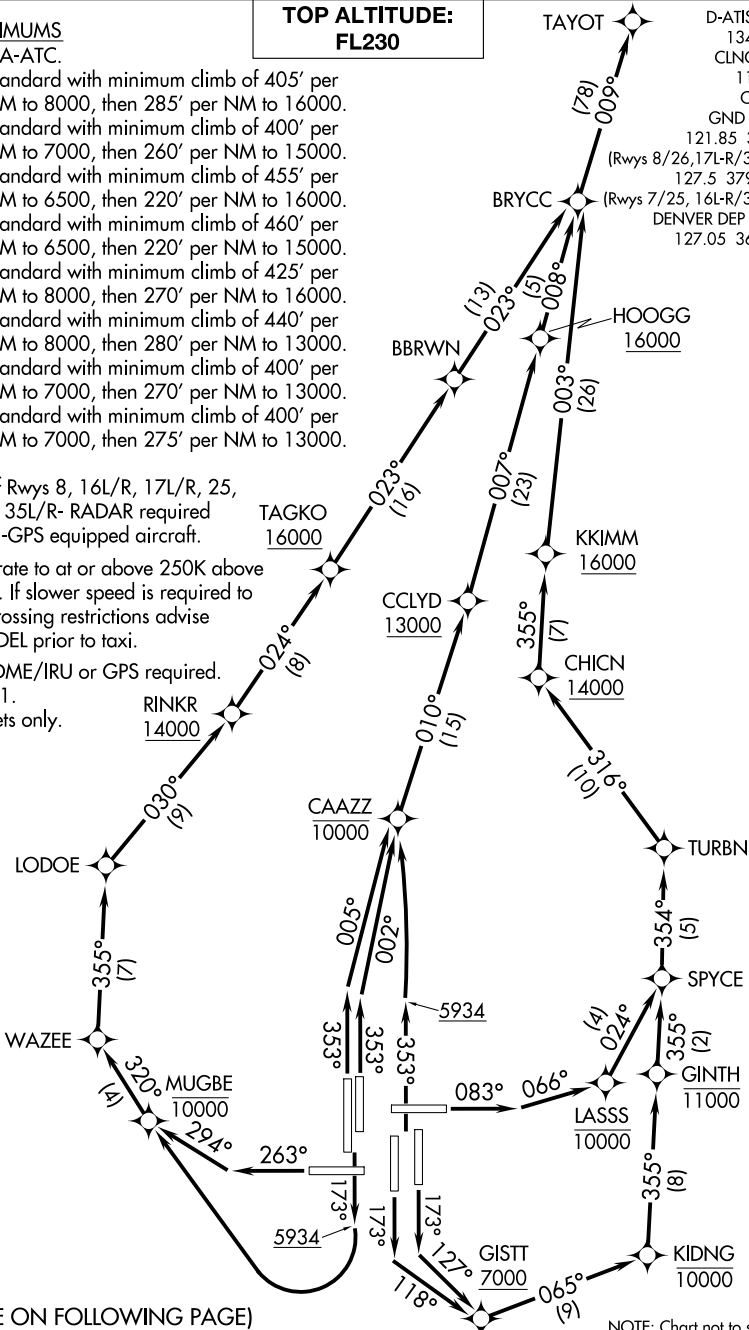
NOTE: Takeoff Rwys 8, 16L/R, 17L/R, 25, 34L/R, 35L/R- RADAR required for non-GPS equipped aircraft.

NOTE: Accelerate to at or above 250K above 10000. If slower speed is required to meet crossing restrictions advise CLNC DEL prior to taxi.

NOTE: DME/DME/IRU or GPS required.

NOTE: RNAV 1.

NOTE: Turbojets only.



(NARRATIVE ON FOLLOWING PAGE)

NOTE: Chart not to scale.

BRYCC FOUR DEPARTURE (RNAV)

(BRYCC4.TAYOT) 13SEP18

DENVER, COLORADO  
DENVER INTL (DEN)

SW-1, 15 AUG 2019 to 12 SEP 2019

SW-1, 15 AUG 2019 to 12 SEP 2019