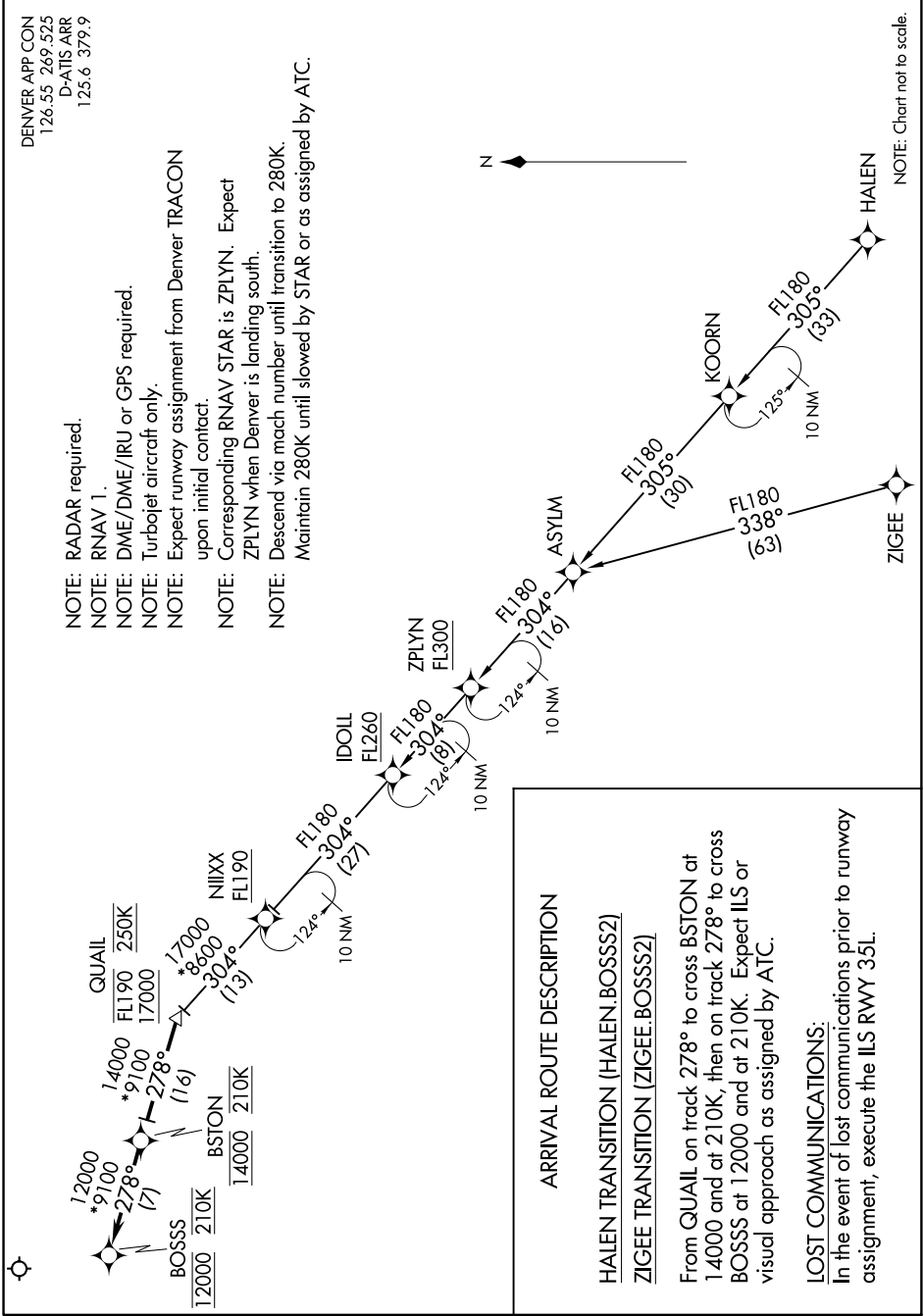


SW-1, 15 AUG 2019 to 12 SEP 2019



DENVER APP CON  
126.55 269.525  
D-ATIS ARR  
125.6 379.9

- NOTE: RADAR required.
- NOTE: RNAV 1.
- NOTE: DME/DME/IRU or GPS required.
- NOTE: Turbopjet aircraft only.
- NOTE: Expect runway assignment from Denver TRACON upon initial contact.
- NOTE: Corresponding RNAV STAR is ZPLYN. Expect ZPLYN when Denver is landing south.
- NOTE: Descend via mach number until transition to 280K. Maintain 280K until slowed by STAR or as assigned by ATC.



NOTE: Chart not to scale.

SW-1, 15 AUG 2019 to 12 SEP 2019