

WAAS CH <b>82330</b> <b>W29A</b>	APP CRS <b>291°</b>	Rwy Idg TDZE <b>1164</b> Apt Elev <b>1171</b>	<b>5001</b>
----------------------------------------	------------------------	-----------------------------------------------------	-------------

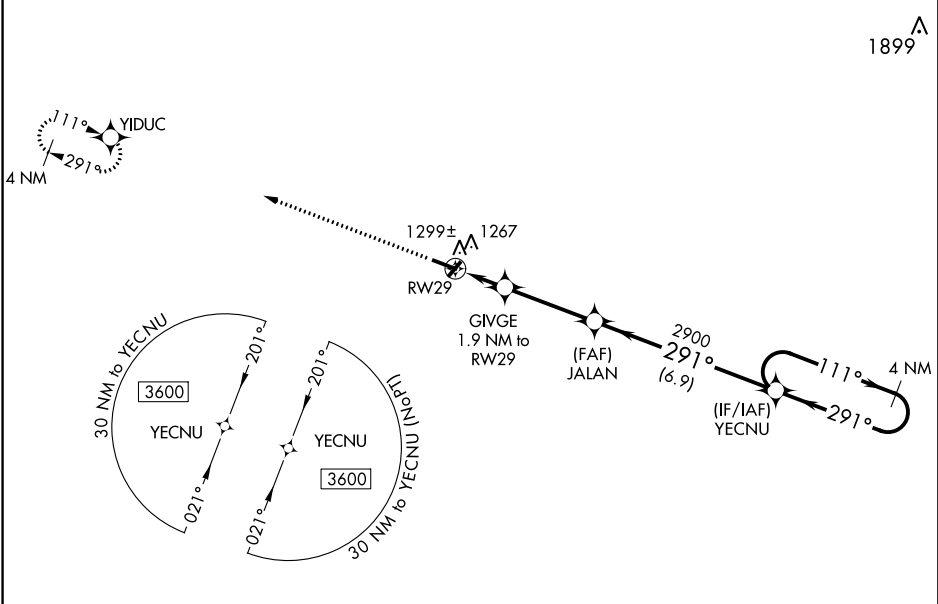
# RNAV (GPS) RWY 29

IOWA COUNTY (MRJ)

**⚠** Baro-VNAV NA when using Platteville altimeter setting. For uncompensated Baro-VNAV systems, LNAV/VNAV NA below -17°C (2°F) or above 54°C (130°F). When local altimeter setting not received, use Platteville altimeter setting and increase all DA 55 feet, increase LPV all Cats visibility 1/8 mile and LNAV/VNAV all Cats visibility 1/4 mile, increase all MDA 60 feet and LNAV Cat C visibility 1/4 mile. DME/DME RNP-0.3 NA.

**MISSED APPROACH:**  
Climb to 3500 direct YIDUC and hold.

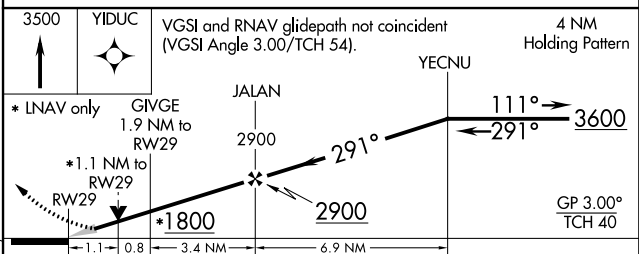
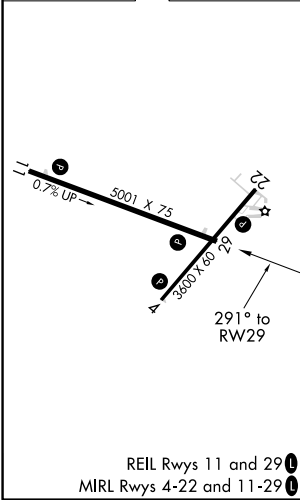
AWOS-3 <b>118.525</b>	CHICAGO CENTER <b>133.95 281.4</b>	GCO <b>121.725</b>	UNICOM <b>122.8 (CTAF)</b> <b>⓪</b>
--------------------------	---------------------------------------	-----------------------	----------------------------------------



EC-3, 15 AUG 2019 to 12 SEP 2019

EC-3, 15 AUG 2019 to 12 SEP 2019

ELEV 1171	TDZE 1164
-----------	-----------



CATEGORY	A	B	C	D
LPV DA	1414-7/8	250 (300-7/8)		NA
LNAV/VNAV DA	1469-1	305 (300-1)		NA
LNAV MDA	1580-1	416 (500-1)	1580-1 1/8 416 (500-1 1/8)	NA
CIRCLING	1620-1 449 (500-1)	1640-1 469 (500-1)	1640-1 1/2 469 (500-1 1/2)	NA