

APP CRS <b>267°</b>	Rwy Idg <b>3002</b>
	TDZE <b>146</b>
	Apt Elev <b>146</b>

# RNAV (GPS) RWY 27

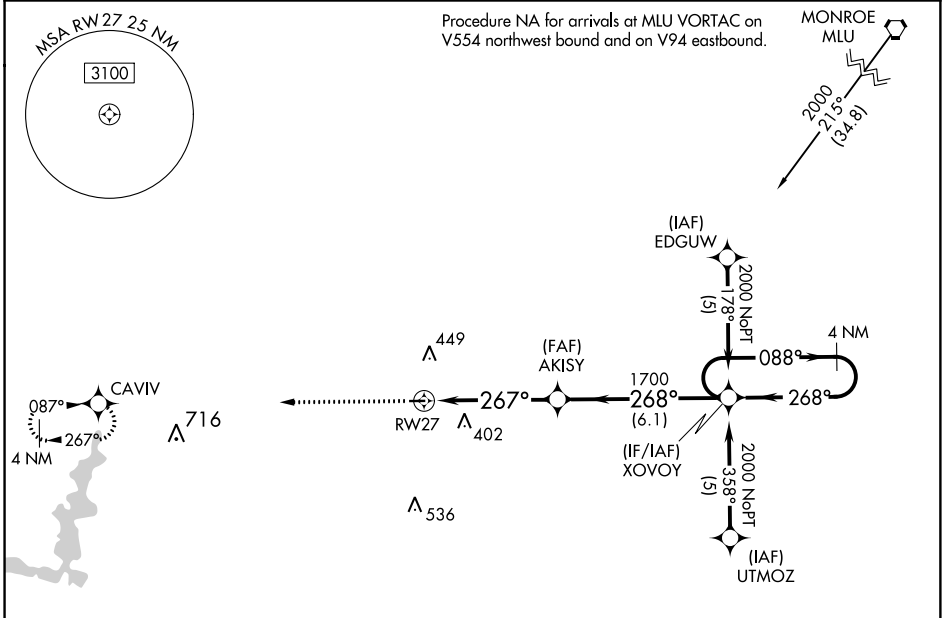
DAVID G JOYCE (ØR5)

RNP APCH.  
 ▼ Use Alexandria Intl altimeter setting, when not received use  
 ▲ NA Esler Rgnl altimeter setting. Procedure NA at night.  
 Helicopter visibility reduction below 1 SM NA.

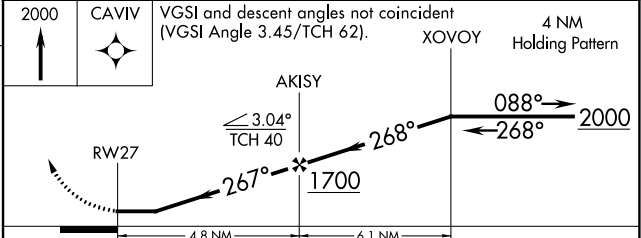
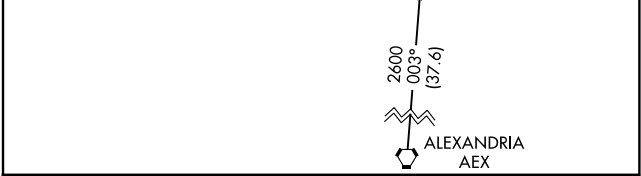
MISSED APPROACH: Climb to 2000 direct  
 CAVIV and hold.

POLK APP CON  
**125.4 302.2**

UNICOM  
**122.7 (CTAF) 0**



ELEV 146	TDZE 146
----------	----------



CATEGORY	A	B	C	D
LNAV MDA	740-1	594 (600-1)		NA

MIRL Rwy 9-27 0  
 REIL Rwy 9 and 27 0

SC-4, 15 AUG 2019 to 12 SEP 2019

SC-4, 15 AUG 2019 to 12 SEP 2019