

WAAS CH 90507 W10A	APP CRS 100°	Rwy Idg TDZE Apt Elev	3803 424 424
---------------------------------	------------------------	-----------------------------	---

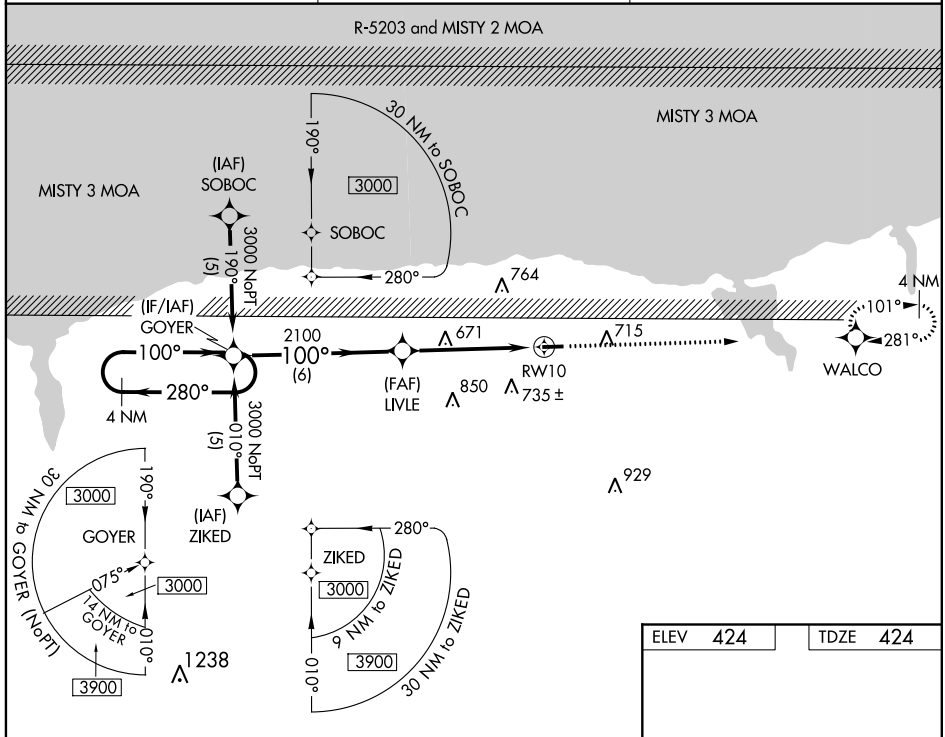
RNAV (GPS) RWY 10

WILLIAMSON-SODUS (SDC)

⚠ DME/DME RNP-0.3 NA. When VGSI inop, Straight-in and Circling Rwy 10 procedures NA at night. When VGSI inop, Circling Rwy 28 NA at night. Visibility reduction by helicopters NA. When local altimeter setting not received, use Rochester altimeter setting and increase all DA 77 feet and all MDA 80 feet, LPV all Cats visibility 1/4 mile, and Circling Cat C visibility 1/2 mile.

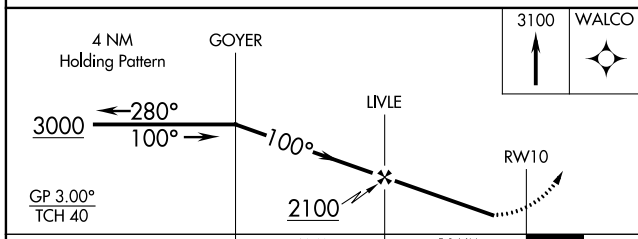
MISSED APPROACH: Climb to 3100 direct WALCO and hold.

AWOS-3 124.2	ROCHESTER APP CON 119.55 269.6	UNICOM 122.8 (CTAF) 0
------------------------	--	---------------------------------

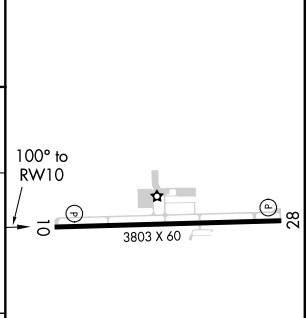


NE-2, 15 AUG 2019 to 12 SEP 2019

NE-2, 15 AUG 2019 to 12 SEP 2019



ELEV 424	TDZE 424
----------	----------



CATEGORY	A	B	C	D
LPV DA	760-1 1/4	336 (400-1 1/4)		NA
LNAV MDA	940-1	516 (600-1)	940-1 1/2 516 (600-1 1/2)	NA
CIRCLING	1000-1	576 (600-1)	1020-1 1/2 596 (600-1 1/2)	NA

MIRL Rwy 10-28 0
REIL Rwy 10 and 28 0