

WAAS CH 77607 W08A	APP CRS 075°	Rwy Idg TDZE Apt Elev	5000 709 716
--	------------------------	-----------------------------	---

RNAV (GPS) RWY 8

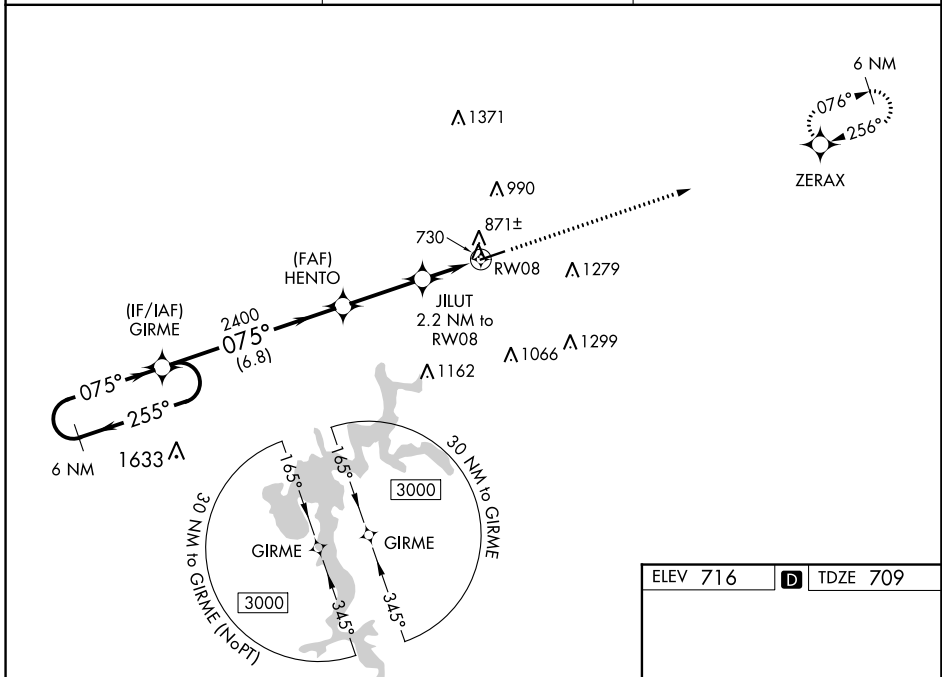
GLASGOW MUNI (GLW)

RNP APCH.

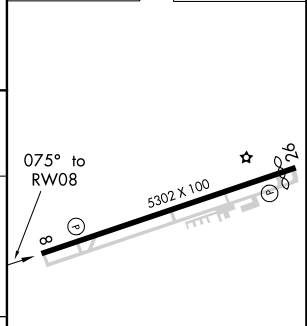
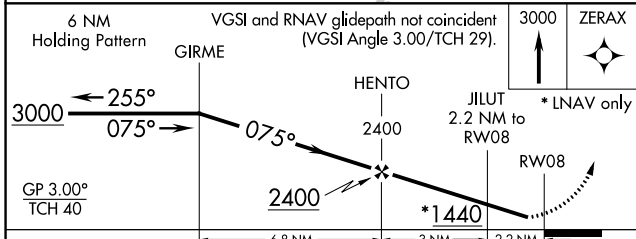
▼ Baro-VNAV and VDP NA when using Bowling Green altimeter setting. For uncompensated Baro-VNAV systems, LNAV/VNAV NA below -16°C (4°F) or above 39°C (102°F).
▲ When local altimeter setting not received, use Bowling Green altimeter setting: increase LPV DA to 1109 feet and all visibilities ½ SM; increase LNAV/VNAV DA to 1263 feet and all visibilities ½ SM; increase all MDA 160 feet and LNAV Cat C visibility ½ SM and LNAV Cat D visibility ¼ SM. Rwy 8 helicopter visibility reduction below ¼ SM NA.

MISSED APPROACH: Climb to 3000 direct ZERAX and hold.

AWOS-3 118.525	MEMPHIS CENTER 132.9 263.1	UNICOM 122.8 (CTAF)
--------------------------	--------------------------------------	-------------------------------



ELEV 716		TDZE 709
----------	--	----------



CATEGORY	A	B	C	D
LPV DA	971-1		262 (300-1)	
LNAV/VNAV DA	1125-1 3/8		416 (500-1 3/8)	
LNAV MDA	1140-1	431 (500-1)	1140-1 1/4	431 (500-1 1/4)

MIRL Rwy 8-26

REIL Rwy 8 and 26

SE-1, 15 AUG 2019 to 12 SEP 2019

SE-1, 15 AUG 2019 to 12 SEP 2019