

WAAS CH 70344 W32A	APP CRS 318°	Rwy Idg TDZE Apt Elev	5179 238 240
--	------------------------	-----------------------------	---

RNAV (GPS) RWY 32

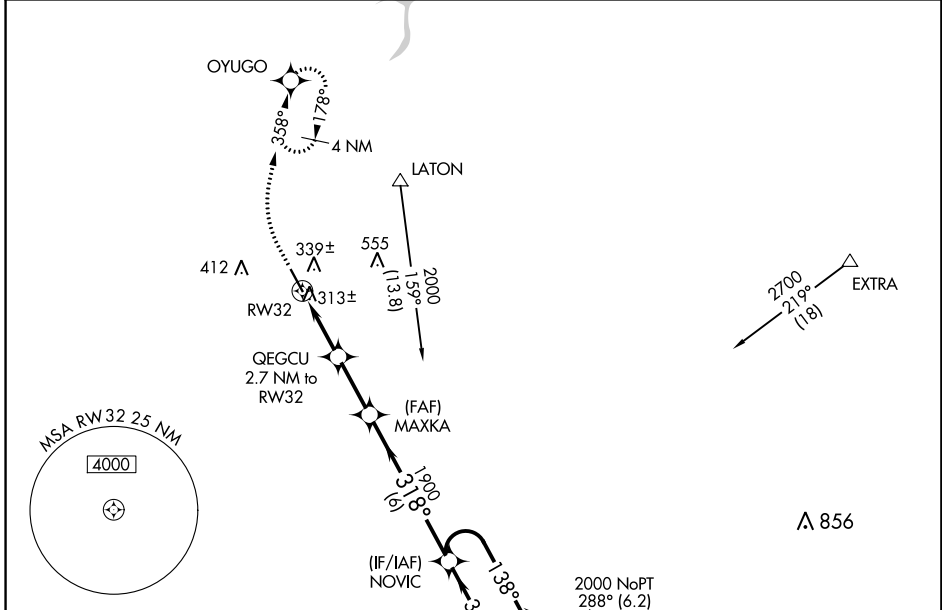
HANFORD MUNI (HJO)

RNP APCH.

▼ Rwy 32 helicopter visibility reduction below 3/4 SM NA. For uncompensated Baro-VNAV systems, LNAV/VNAV NA below -3°C or above 54°C. Circling Rwy 14 NA at night.

MISSED APPROACH: Climb to 700 then climbing right turn to 2000 direct OYUGO and hold, continue climb-in-hold to 2000.

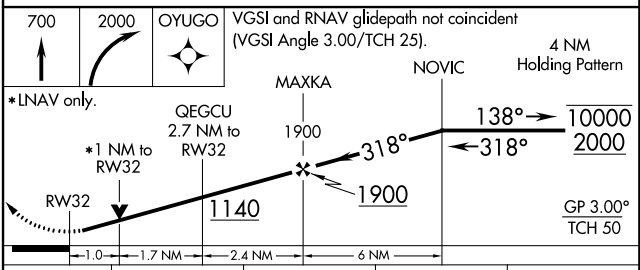
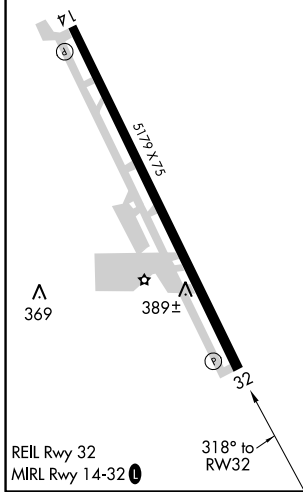
ASOS 134.75	FRESNO APP CON 123.9	CLNC DEL 123.9	UNICOM 122.8 (CTAF)
-----------------------	--------------------------------	--------------------------	-------------------------------



SW-2, 15 AUG 2019 to 12 SEP 2019

SW-2, 15 AUG 2019 to 12 SEP 2019

ELEV 240	TDZE 238
-----------------	-----------------



CATEGORY	A	B	C	D
LPV DA	488-3/4	250 (300-3/4)		NA
LNAV/VNAV DA	488-3/4	250 (300-3/4)		NA
LNAV MDA	580-1	342 (400-1)	580-1 1/2 342 (400-1 1/2)	NA
C CIRCLING	680-1 440 (500-1)	720-1 480 (500-1)	720-1 1/2 480 (500-1 1/2)	NA