


WAAS CH <b>61103</b> <b>W27A</b>	APP CRS <b>270°</b>	Rwy Idg TDZE Apt Elev	<b>5999</b> <b>92</b> <b>112</b>
--	------------------------	-----------------------------	--

# RNAV (GPS) RWY 27

ESLER RGNL (ESF)

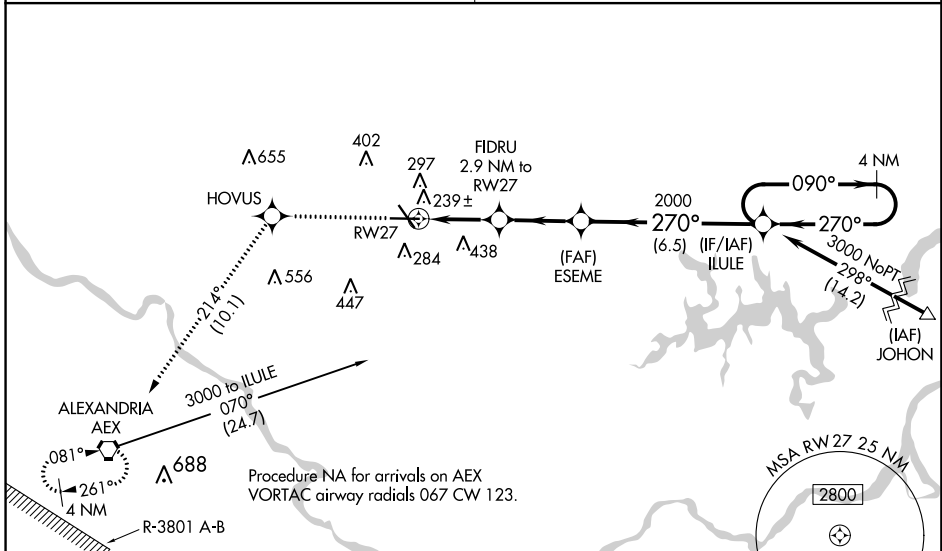
▼ When VGSI inop, Circling Rwy 14-32 NA at night. Baro-VNAV and VDP NA when using Alexandria Intl altimeter setting. For uncompensated Baro-VNAV systems, LNAV/VNAV NA below -6°C (22°F) or above 54°C (130°F). DME/DME RNP-0.3 NA. When local altimeter setting not received, use Alexandria Intl altimeter setting and increase all DA 35 feet and all MDA 40 feet, increase LNAV/VNAV all Cats and LNAV Cat C/D visibility 1/8 mile. For inoperative MALSR increase LNAV/VNAV all Cats visibility to 1 mile and LNAV Cat C/D visibility to 1 1/8. For inoperative MALSR, when using Alexandria Intl altimeter setting, increase LNAV/VNAV all Cats visibility to 1 1/8 mile.

**MALSR**

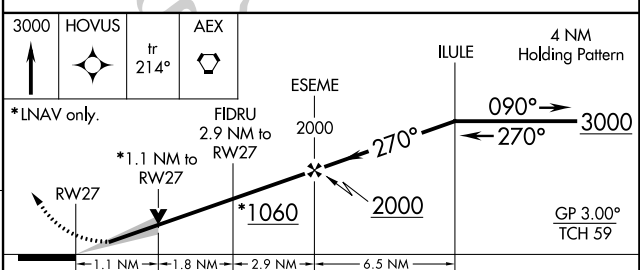
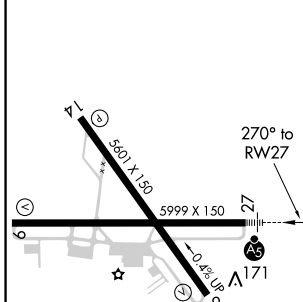


**MISSED APPROACH:**  
Climb to 3000 direct HOVUS and on track 214° to AEX VORTAC and hold.

POLK APP CON <b>125.4 254.8</b>	UNICOM <b>122.8 (CTAF) 0</b>
------------------------------------	---------------------------------



ELEV 112	<b>D</b>	TDZE 92
----------	----------	---------



CATEGORY	A	B	C	D
LPV DA		292-1/2	200 (200-1/2)	
LNAV/VNAV DA		422-5/8	330 (400-3/8)	
LNAV MDA	500-1/2	408 (400-1/2)	500-3/4	408 (400-3/4)
CIRCLING	600-1	488 (500-1)	600-1 1/2 488 (500-1 1/2)	740-2 628 (700-2)

REIL Rws 9, 14 and 32  
MIRL Rwy 14-32  
HIRL Rwy 9-27

SC-4, 15 AUG 2019 to 12 SEP 2019

SC-4, 15 AUG 2019 to 12 SEP 2019