

WAAS CH <b>90115</b> <b>W15A</b>	APP CRS <b>149°</b>	Rwy Idg <b>9898</b> TDZE <b>151</b> Apt Elev <b>151</b>
--	------------------------	---

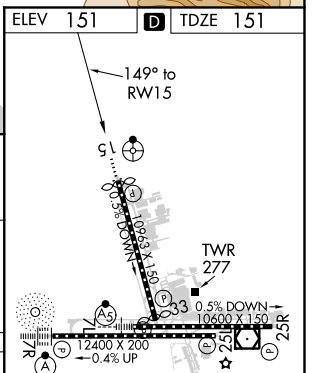
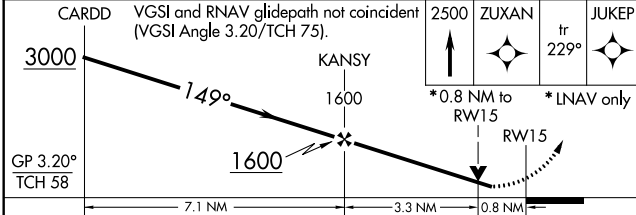
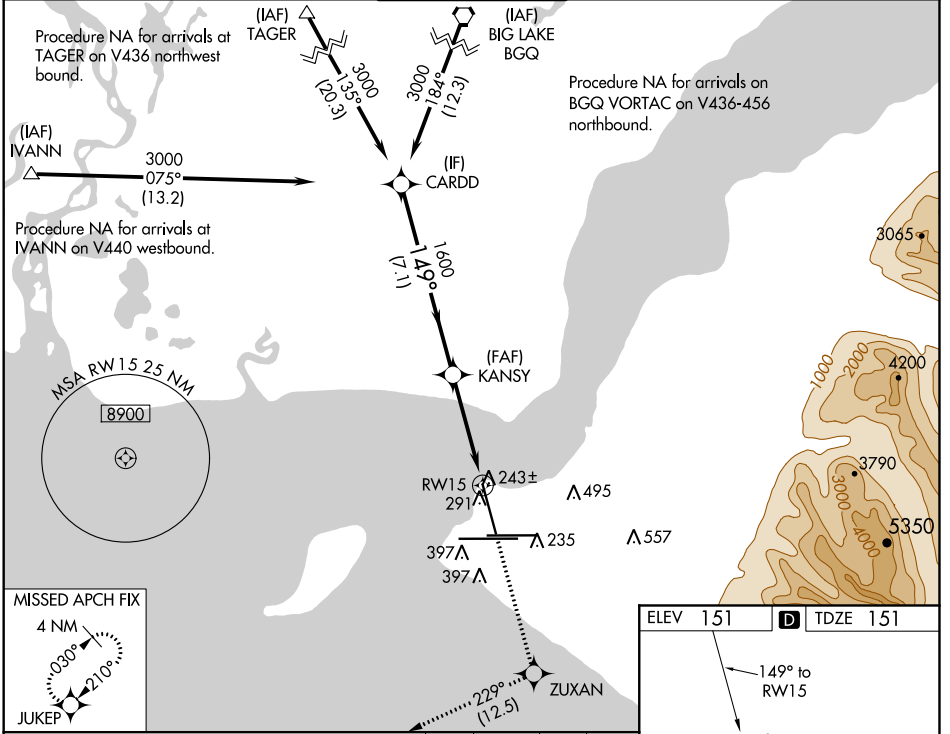
# RNAV (GPS) RWY 15

TED STEVENS ANCHORAGE INTL (ANC) (PANC)

**⚠** Inop table does not apply to LNAV/VNAV. For uncompensated Baro-VNAV systems, LNAV/VNAV NA below -25°C (-13°F) or above 54°C (130°F). Rwy 15 helicopter visibility reduction below RVR 4000 NA. DME/DME RNP-0.3 NA. For inop ODALS, increase LPV all Cats visibility to RVR 4500, and LNAV Cats C/D visibility to RVR 5500.

**ODALS**  
 MISSED APPROACH: Climb to 2500 direct ZUXAN on track 229° to JUKEP and hold.

D-ATIS <b>135.5</b>	ANCHORAGE APP CON <b>118.6 290.5</b>	ANCHORAGE TOWER <b>118.3 257.8</b>	GND CON <b>121.9 338.25</b>	CLNC DEL <b>119.4 323.1</b>
------------------------	---	---------------------------------------	--------------------------------	--------------------------------



CATEGORY	A	B	C	D
LPV DA		418/40	267 (300-¾)	
LNAV/VNAV DA		401/40	250 (300-¾)	
LNAV MDA	500/40	349 (400-¾)	500/45	349 (400-¾)
CIRCLING	700-1	549 (600-1)	700-1½ 549 (600-1½)	800-2 649 (700-2)

REIL Rwy 33  
TDZ/CL Rwsy 7L and 7R  
HIRL all Rwsy

AK, 15 AUG 2019 to 10 OCT 2019

AK, 15 AUG 2019 to 10 OCT 2019