

LOC/DME I-ANC 111.3 Chan 50	APP CRS 074°	Rwy ldg 12400 TDZE 132 Apt Elev 151
--	------------------------	--

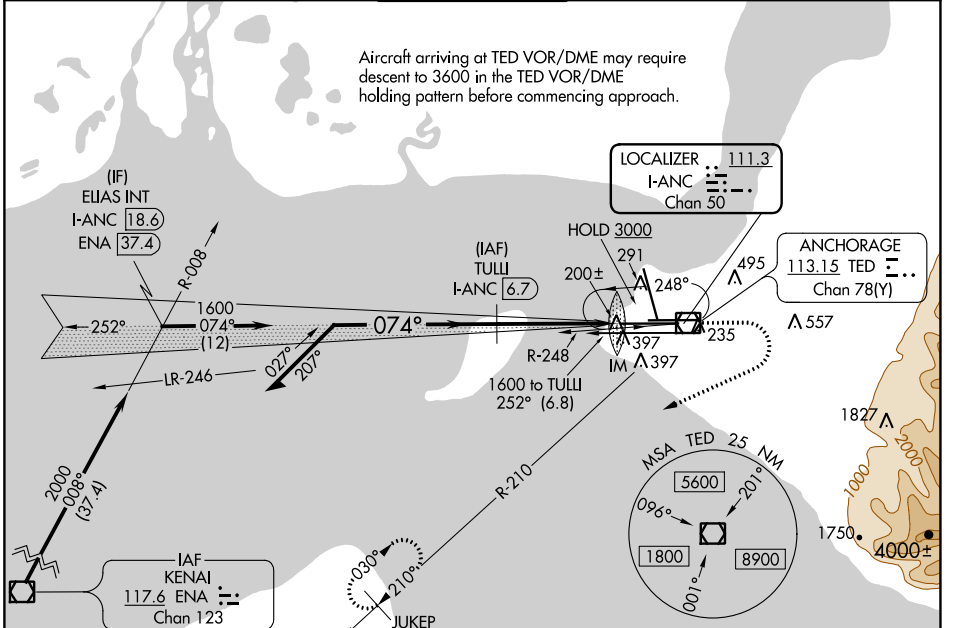
ILS RWY 7R (CAT II & III)

TED STEVENS ANCHORAGE INTL (ANC) (PANC)

<p>▼ DME required. Rwy 7L threshold 6140 feet east of Rwy 7R threshold. CAT II: RVR 1000 authorized with specific OPSPEC, MSPEC, or LOA approval and use of autoland or HUD to touchdown.</p>	<p>ALSF-2</p>	<p>MISSED APPROACH: Climb to 600 then climbing right turn to 2500 on TED VOR/DME R-210 to JUKEP/TED 15 DME and hold.</p>
--	---------------	--

D-ATIS 135.5	ANCHORAGE APP CON 118.6 290.5	ANCHORAGE TOWER 118.3 257.8	GND CON 121.9 338.25	CLNC DEL 119.4 323.1
------------------------	---	---------------------------------------	--------------------------------	--------------------------------

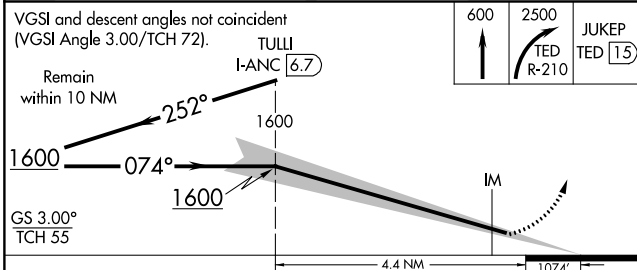
Aircraft arriving at TED VOR/DME may require descent to 3600 in the TED VOR/DME holding pattern before commencing approach.



AK, 15 AUG 2019 to 10 OCT 2019

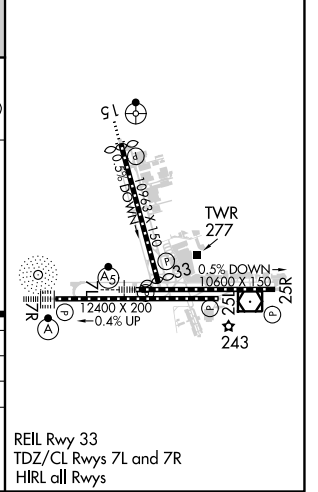
AK, 15 AUG 2019 to 10 OCT 2019

ELEV 151	D TDZE 132
----------	-------------------



CATEGORY	A	B	C	D
S-ILS 7R	CAT II RA 115/12 100 DA 232			
S-ILS 7R	CAT III RVR 06			

CATEGORY II & III ILS - SPECIAL AIRCREW & AIRCRAFT CERTIFICATION REQUIRED



REIL Rwy 33
TDZ/CL Rwys 7L and 7R
HIRL all Rwys