

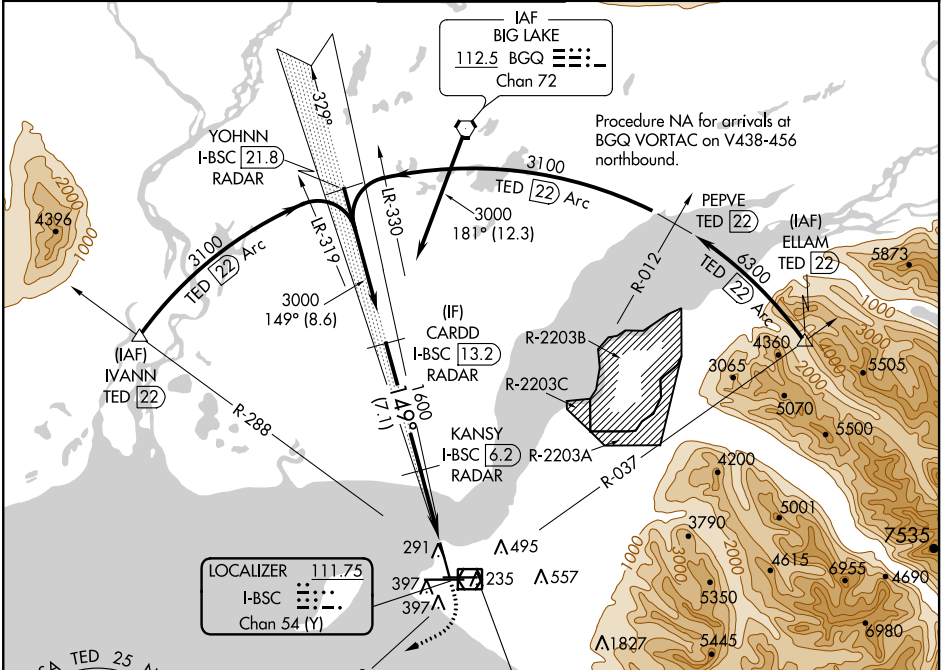
LOC/DME I-BSC <b>111.75</b> Chan <b>54 (Y)</b>	APP CRS <b>149°</b>	Rwy Idg <b>9898</b> TDZE <b>151</b> Apt Elev <b>151</b>
--	------------------------	--

# ILS RWY 15

## TED STEVENS ANCHORAGE INTL (ANC) (PANC)

DME required.	ODALS	MISSED APPROACH: Climb to 800 then climbing right turn to 2500 on heading 200° and TED VOR/DME R-210 to JUKEP/TED 15 DME and hold.
▼ Rwy 15 helicopter visibility reduction below RVR 4000 NA. Inop table does not apply.		

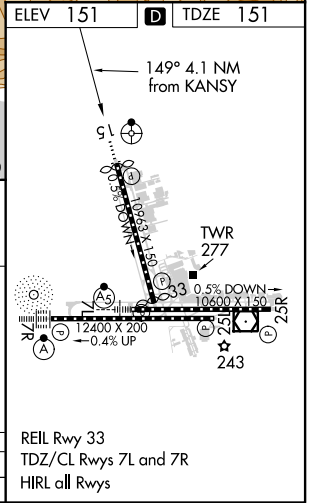
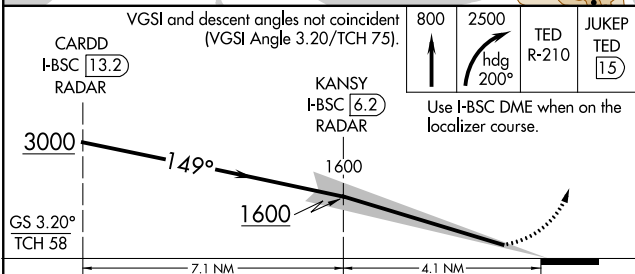
D-ATIS <b>135.5</b>	ANCHORAGE APP CON <b>118.6 290.5</b>	ANCHORAGE TOWER <b>118.3 257.8</b>	GND CON <b>121.9 338.25</b>	CLNC DEL <b>119.4 323.1</b>
------------------------	---	---------------------------------------	--------------------------------	--------------------------------



AK, 15 AUG 2019 to 10 OCT 2019

AK, 15 AUG 2019 to 10 OCT 2019

LOCALIZER I-BSC 111.75 Chan 54 (Y)	ANCHORAGE 113.15 TED Chan 78 (Y)	ELEV 151	TDZE 151
--	--	----------	----------



# ILS RWY 15